



# LFX and the LF Networking Technical Community

Solutions for every stage of the project lifecycle

# Intros



**Henry Quaye**  
LFX Community Manager,  
Linux Foundation



**Brandon Wick**  
Sr Director of Marketing  
Aarna Networks

# Agenda

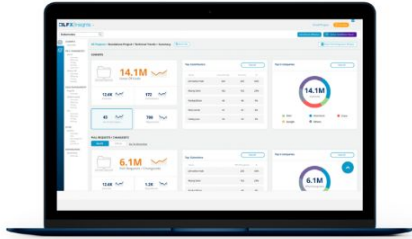
- **Building LFX**
- **A Note on Individual Contribution**
- **LFX Overview**
- **Why Would the Technical Community be interested in using LFX?**
- **How Do You Start?**
- **LFX Demo**
- **LFX for LF Networking**
- **LFX Action Checklist**
- **Additional Support This Week**



# Building LFX



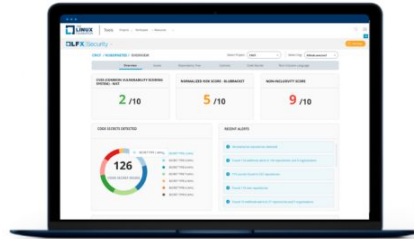
# Building LFX



## LFX Insights

Rich insights to measure, manage and optimize efforts

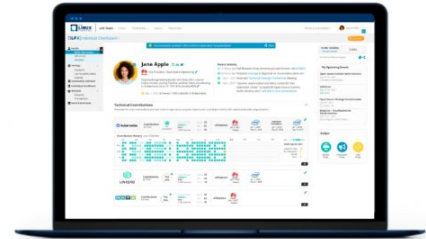
[Explore LFX Insights »](#)  
[Learn More »](#)



## LFX Security

Continuously and transparently secure your open source supply chain

[Secure Your Project »](#)  
[Learn More »](#)

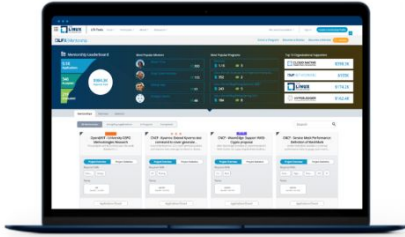


## LFX Individual Dashboard

Track and share your open source achievements with a Community Profile

[Manage Your Profile »](#)  
[Learn More »](#)

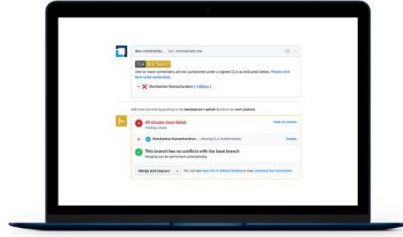
# Building LFX



## LFX Mentorship

Develop and support diverse talent and build your open source skillset

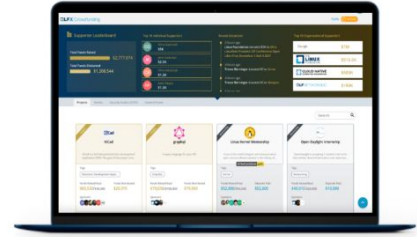
[View Mentorships »](#)  
[Learn More »](#)



## LFX EasyCLA

Protect intellectual property while empowering contributions

[Manage Contributions»](#)  
[Learn More»](#)

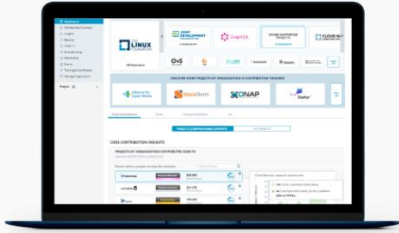


## LFX Crowdfunding

Self-service, low friction funding for projects and supporters

[Make a Donation »](#)  
[Learn More»](#)

# Building LFX

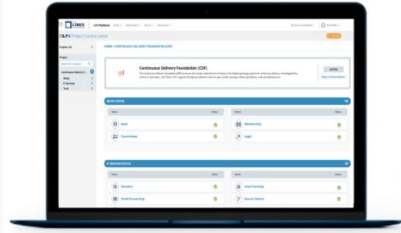


BETA

## LFX Organization Dashboard

Analyze and optimize your organization's open source impact

[Explore Organization Dashboard»](#)  
[Sign Up For Beta Program »](#)



BETA

## LFX Project Control Center

Manage open source project operations through a unified control plane

[Explore Project Control Center »](#)  
[Sign Up For Beta Program »](#)

## Explore More LFX tools

- [LFX Member Enrollment](#)
- [LFX Landscape](#)
- [LFX Community Events](#)
- [LFX Training Portal](#)

## ...and join the LFX Community

- [LFX Community Forum](#)

# Building LFX

765,460

Contributing Developers

16,618

Contributing Companies

46M

Lines of Code Added Weekly

11.8M

Lines of Code Deleted Weekly

2.8M

Project Builds

1M

Logged Issues

13,055

Repositories

263,499

Vulnerabilities Detected

11,415

Vulnerabilities Fixed

200,000

Free Course Enrollments

59,586

Event Attendees in Last 12 Months

2.7M

Email Messages Sent

2.1M

Chat Messages Sent

36,903

CLAs Signed

10,670

Mentees Applied

26,998

2020 Community Meetings



## Key Points

- LFX is a platform to build and facilitate every aspect of open source development
- It's the primary tool for building transparency and understanding LF Project contributions and impact
- For LFN Members, you can use it maximize **your** investment and measure the success of **your** contributions

# Building LFX

IN MEMORY

*Shubhra  
Kar*





# A Note on Individual Contribution



## A Note on Individual Contribution

- Individuals make up the the the Linux Foundation Community
- Each of **you** has a role to play in making LFX work
- Updating your Individual Dashboard is the Number One action that can improve our data completeness and accuracy



# LFX Overview



# How do you measure your personal impact within a community?

- > Understanding your personal impact to open source communities can be complex.
- > You have multiple contribution types.
- > And there's multiple source control platforms.



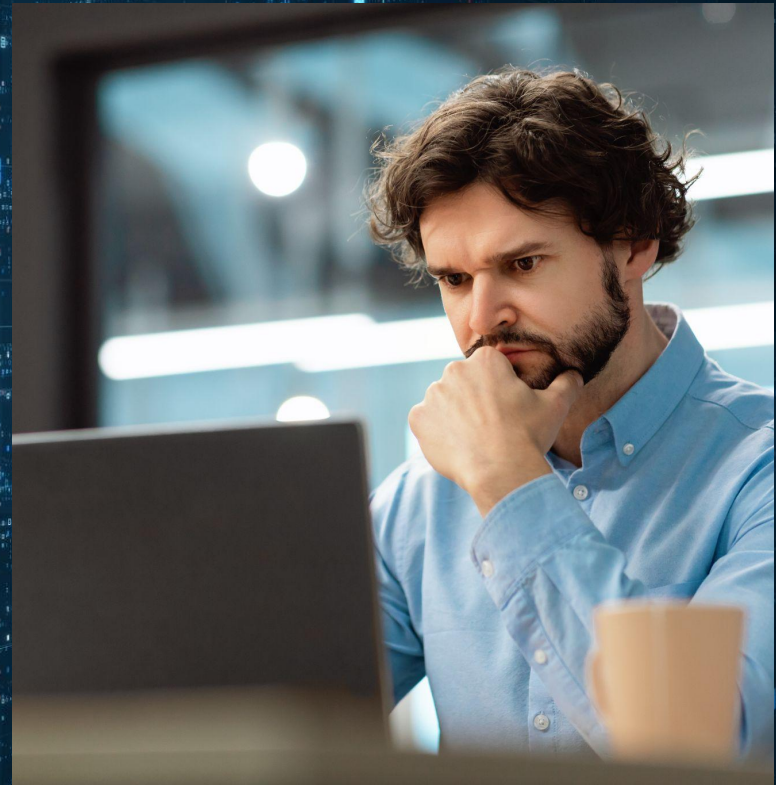
# Running queries to capture contribution metrics can become complex

```
GraphiQL ▶ Prettify
```

```
1 query($login: String!, $repo: String!, $pullRequestsCount: Int, $reviewsCount: Int, $commentsCount: Int) {
2   organization(login: $login) {
3     name
4     url
5     repository(name: $repo) {
6       name
7       pullRequests(last: $pullRequestsCount, states: [OPEN]) {
8         edges {
9           node {
10            title
11            reviews(last: $reviewsCount) {
12              edges {
13                node {
14                  comments(last: $commentsCount) {
15                    edges {
16                      node {
17                        author {
18                          name
19                        }
20                      }
21                    }
22                  }
23                }
24              }
25            }
26          }
27        }
28      }
29    }
30  }
31 }
32 }
```

QUERY VARIABLES

```
1 {
2   "login": "rails",
3   "repo": "rails",
4   "pullRequestsCount": 10
5 }
```



# How do you understand the health of the projects your contributing to?

- > How do you understand how quickly your contributions are being merged to the main branch?
- > Or how secure the project's dependencies are?

**This is where LFX comes in...**

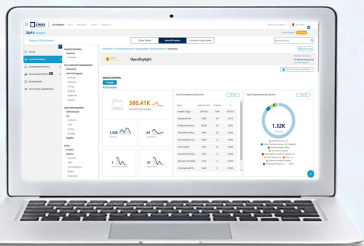




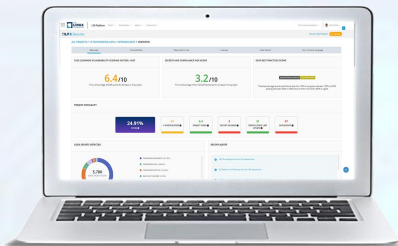
# What is LFX?

**LFX is a platform of tools** built by the Linux Foundation to facilitate every aspect of open source development.

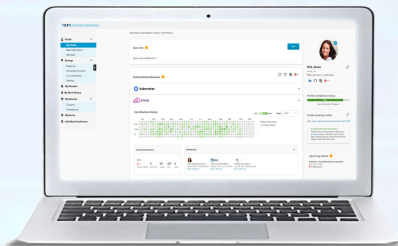
The platform empowers developers to efficiently, **showcase, measure, and scale the impact of your open source contributions.**



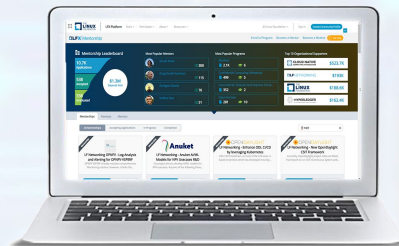
**LFX** Insights



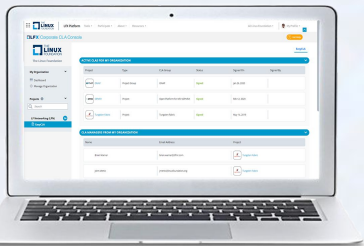
**LFX** Security



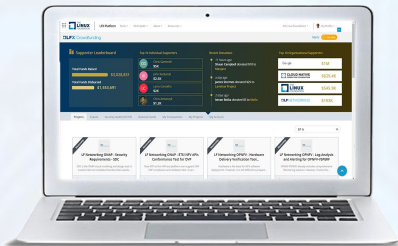
**LFX** Individual Dashboard



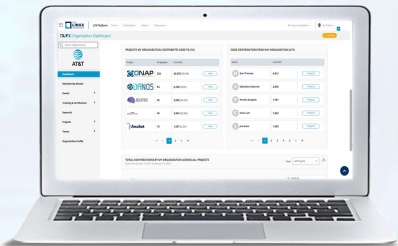
**LFX** Mentorship



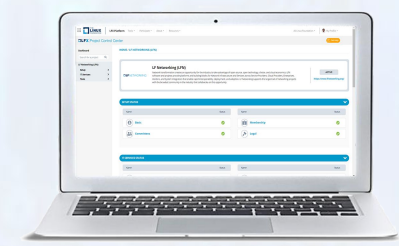
**LFX** EasyCLA



**LFX** Crowdfunding



**LFX** Organization Dashboard



**LFX** Project Control Center



Why would the technical communities be interested in using LFX?

# Target Persona: Developers

## Step 1- Join LF projects



### Create LFID

- SSO login
- Access to all LFX tools
- Access to LF Resources

### Individual Dashboard profile

- Connect your contribution identities (GitHub and Slack accounts)
- Connect LinkedIn to configure your contribution affiliations
- Highlight your contributions
- Keep track of your LFX Meetings in

### EasyCLA

- Streamline your Corporate and Individual CLA access process

## Step 2- Monitor

### Insights

- Visibility into your projects performance
- Parse through various contribution metrics
- Benchmark your performance against your community

### Security

- Understand project security health
- Monitor find and remediate vulnerabilities for your project dependencies



## Step 3- Manage your Open Source Career

### Mentorship

- Develop your career skills and become a mentor
- Attract new contributors
- Promote a diverse community

### Training and Certification

- Increase your impact power by learning more technologies
- Gain qualifications by attaining certifications for more technologies



# How do you start?





## CREATE YOUR ACCOUNT

Create your LFID today – it's quick and easy. An LFID gives you access to:

- The LFX platform — a digital toolkit to manage your open source projects, contributions, and open source community profile
- Single sign-on across LF events, training, and other programs
- Information about our latest open source and industry research

<input type="text" value="First name"/>	<input type="text" value="Last name"/>
<input type="text" value="Email address"/>	
<input type="password"/>	<input type="password"/>

By continuing, you agree to the creation of an LFID in accordance with our [Privacy Policy](#) and [Terms of Use](#).

Create Account

[Back](#)

[Learn more ▶](#)

# Create your LFID

## INDIVIDUAL DASHBOARD

# Contributor Engagement - It all starts with the Individual Dashboard

INDIVIDUAL DASHBOARD / PROFILE / MY PROFILE

**GET NOTICED!** Showcase your open source contributions & automatically build your profile by connecting to your LinkedIn and repository accounts. [CONNECT ACCOUNTS.](#) >

### About Me

Edit

I have been an active member of the TOC as a contributor. I have led and participated in discussions on how to improve the impact of the CNCF through the TOC and its wider community. Open-source believer.

**Rita Jones**  
Community Developer at Acme, Inc.  
San Francisco, United States

in GitHub Docker

### Badges

- OPEN SOURCE SUMMIT 2020 SPEAKER
- OPEN SOURCE SUMMIT 2020 PROGRAM COMMITTEE
- THE LINUX FOUNDATION CERTIFIED SYSADMIN
- CERTIFIED KUBERNETES FABRIC ADMINISTRATOR
- CERTIFIED KUBERNETES SAWTOOTH ADMINISTRATOR
- CLOUD FOUNDRY CERTIFIED DEVELOPER

> Where you go to manage your open source profile and ensure your contributions are recognized across projects

> Showcase professional accomplishments, presentations and speaking engagements

# Connect your Git and LinkedIn accounts!

**LinkedIn** Get noticed! The fastest & easiest way to affiliate your open source contributions with your employment history.



Connect to LinkedIn

THE LINUX FOUNDATION LFX Platform Tools Participate About Resources All Linux Foundation My Profile

OLFX Individual Dashboard [Get Help](#)

Search for a Profile

**Profile**

- My Profile
- Basic Information
- Identities

**Settings**

- Password
- Connected Accounts
- Linux.com Email
- Visibility

**My Calendar**

**My Rewards**

- Coupons
- Transactions

**My Events**

**Individual Enrollments**

**LinkedIn** Get noticed! The fastest & easiest way to affiliate your open source contributions with your employment history. [Connect to LinkedIn](#)

**About Me** [Edit](#)

devoted to fostering an environment where developers are engaging in fruitful conversation for the betterment of the community. "Everybody wants to be great until it's time to do what greats do" Let's turn OS Projects into Category Leaders, together!

**Contributions** [Get noticed!](#) Showcase the contributions you've made to open source projects.

- GitHub** Show the contributions you made using GitHub. [Connect to GitHub](#)
- Gerrit** Put your open source collaboration with Gerrit on display. [Connect to Gerrit](#)
- Git** Using Git when developing source code? Present your contributions. [Connect to Git](#)

**Profile Completion Status** 84% [View Completion Details](#)

**Profile Visibility: Public**

URL: <https://openprofile.dev/pr>

A quick note about your display name: We at the Linux Foundation value your privacy and your ability to control your data. Share what you want to share and keep private what you wish to keep private.

**Henry Quaye**  
LFX Community Manager at The Linux Foundation  
Dallas, United States

**Contributions** [Get noticed!](#) Showcase the contributions you've made to open source projects.

- GitHub** Show the contributions you made using GitHub. [Connect to GitHub](#)
- Gerrit** Put your open source collaboration with Gerrit on display. [Connect to Gerrit](#)
- Git** Using Git when developing source code? Present your contributions. [Connect to Git](#)

INDIVIDUAL DASHBOARD

# Ensure your email information is up to date to receive meeting invitations through LFX

The screenshot shows the LFX Individual Dashboard. The top navigation bar includes 'LFX Platform', 'Tools', 'Participate', 'About', and 'Resources'. The user is logged in as 'All Linux Foundation' and is viewing their 'My Profile' page. The 'Basic Information' section is highlighted in the left sidebar. The main content area shows a profile photo of a man with glasses and a blue checkmark. Below the photo are form fields for 'First Name\*' (Henry), 'Last Name\*' (Quaye), 'Pronoun' (Not Set), 'Email Address' (hquaye@contractor.linuxfoundation.org), and 'Alternate Email Address' (lobyquaye@yahoo.com). There is an 'Add More' button next to the email fields. Below these fields is the 'Current Organization' (The Linux Foundation) and 'Title' (LFX Community Manager). A blue banner at the top of the form area says 'Update your profile photo, add a new email address, change your pronoun or share something about yourself for your community profile' and includes a link: 'Why should you populate it Having your email address up to date ensures that you will always be able to stay connected.'

The screenshot shows a 'PAST MEETINGS' table with a search bar and a note that 'All meeting times are in British Summer Time'. The table has columns for Date, Project, Title, Recording, Transcript, and Passcode. The following table represents the data shown in the screenshot:

Date	Project	Title	Recording	Transcript	Passcode
Friday, June 10, 2022 @ 4:45 pm	Test Project Group IT	JC_RM_Prod_01Apr_01_PublicRec			
Thursday, June 09, 2022 @ 6:00 pm	Open Mainframe Project (OMP)	Open Mainframe Project - TAC meeting 2022 ( 2nd Thursday of the month )			
Friday, June 03, 2022 @ 4:45 pm	Test Project Group IT	JC_RM_Prod_01Apr_01_PublicRec			
Friday, May 27, 2022 @ 4:45 pm	Test Project Group IT	JC_RM_Prod_01Apr_01_PublicRec			
Thursday, May 26, 2022 @ 7:00 pm	Test Project IT	TEST IT Board Monthly Meeting			

At the bottom of the table, it says 'Show Results 1 - 5 of 17' and 'Page 1 of 4'.





# LFX Demo



# Welcome to the LFX Community Forum!

Need help finding anything?

### Welcome!

We are a community for open source communities set on empowering one another to best establish, maintain, and scale our open source ecosystems.

Say Hello

### Watch our LFX Videos

Select your desired LFX tool and watch our short video guides to learn more.

Learn Now

### Community Post of the Week

Keep up with how our communities are leveraging LFX for their communities. This week see how ONAP is leveraging Insights to help grow their community.

Click Here

all categories ▾ all Tools ▾ Latest Top

Category Topics Latest

### LFX General Discussion



This category is for our community to connect and share general insight on how to build, maintain, and scale awesome open source ecosystems with LFX.

1 / week

**Getting Started Introductions** **91**  
 LFX General Discussion 12d

**Blog post from an LF Mentee** **2**  
 LFX Mentorship 2d

# Importance of our LFX Community Forum

- LFX is for developers



# LFX for LFN



- LFX is one of the larger community umbrellas in the Linux Foundation
- For better or worse ;-)) we are often the “guinea pig” for new initiatives from LF IT and the Product Team
- But it’s role we welcome to show leadership and work collectively to pioneer excellence in Open Source



# LFX Checklist



# LFX Checklist

- Set up your LFX Individual Dashboard profile
  - Connect your source control identities
  - Connect your LinkedIn for your affiliations
  - Update your email address
- Say hi, and share feedback in our LFX Community Forum
- Goal: By ONS in November we would like to have X Complete



LFX Individual Dashboard



LFX Community Forum