

A close-up, low-angle shot of a golden wheat field. The wheat stalks are in sharp focus in the foreground, with a soft, warm glow from the sun filtering through the background, creating a bokeh effect. The overall color palette is warm, dominated by yellows, oranges, and browns.

OLF

NETWORKING

LFN Developer & Testing Forum



DLF
NETWORKING

LFN Developer & Testing Forum

Policy Framework Update

Policy Framework Team

A close-up, low-angle shot of a golden wheat field under bright, warm light, creating a soft, bokeh effect in the background. The wheat stalks are in sharp focus in the foreground, showing their intricate structure and vibrant yellow-orange color.

DLF NETWORKING

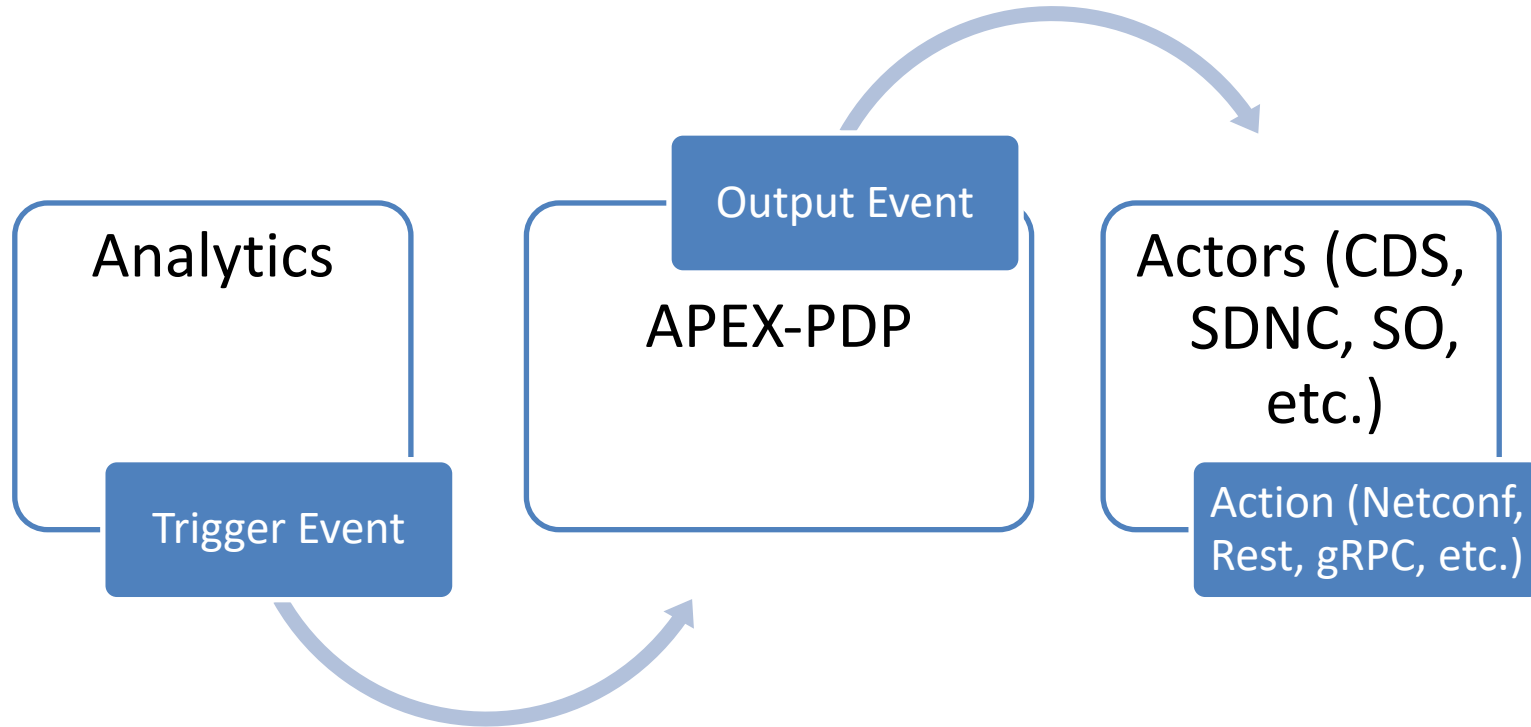
LFN Developer & Testing Forum

Istanbul Achievements

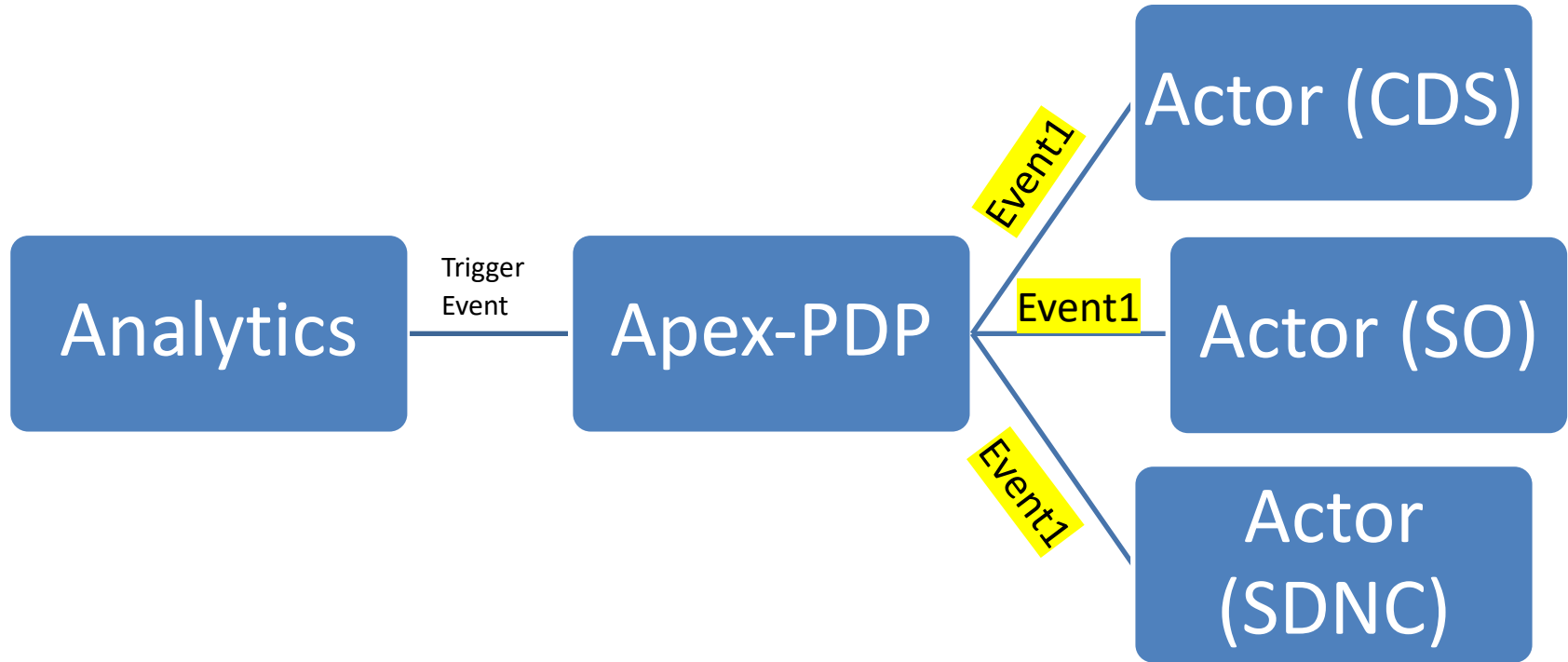
- Integration with Strimzi Kafka for both input & output events.



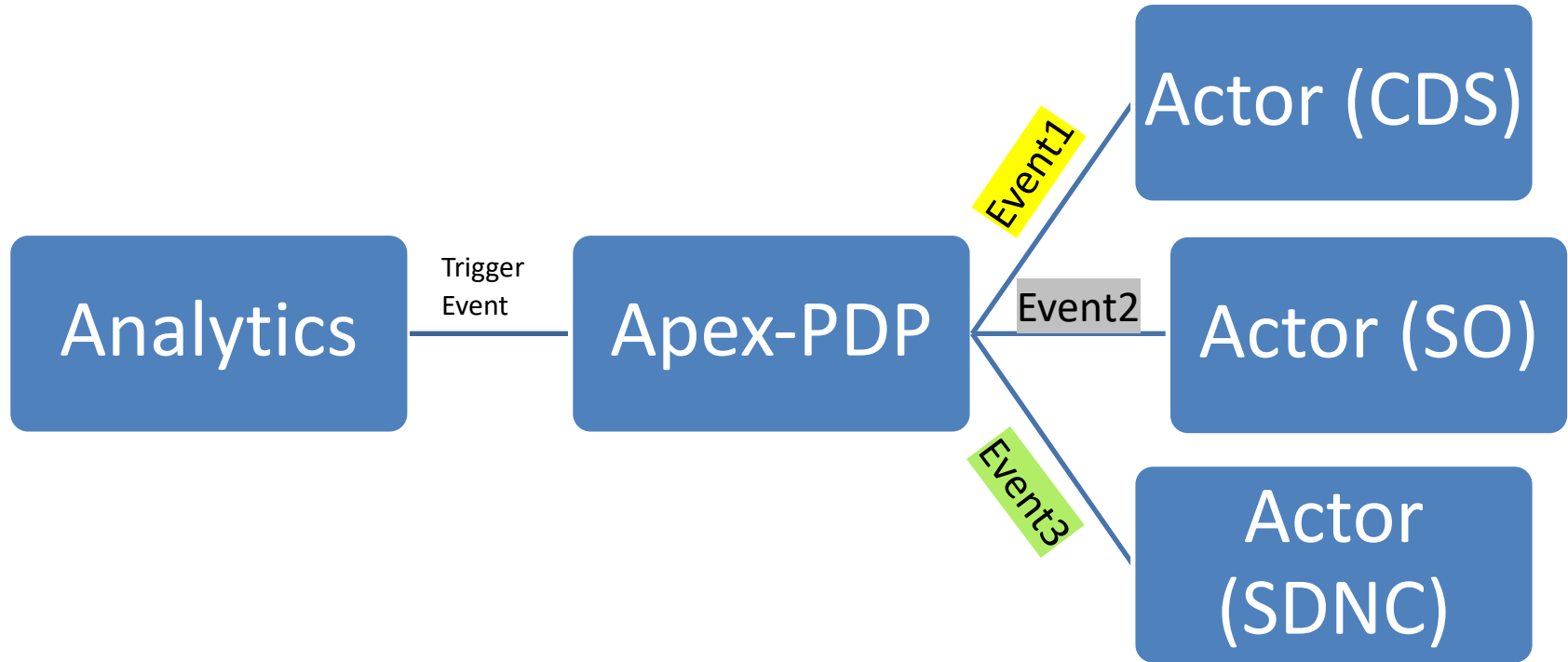
Apex-PDP Enhancements



Apex-PDP Enhancements



Apex-PDP Enhancements



- Reduced verbosity in apex policy definition.
- Optimized logging – around 60-70% reduction in logs with no information loss. ELK stack is much happier now 😊

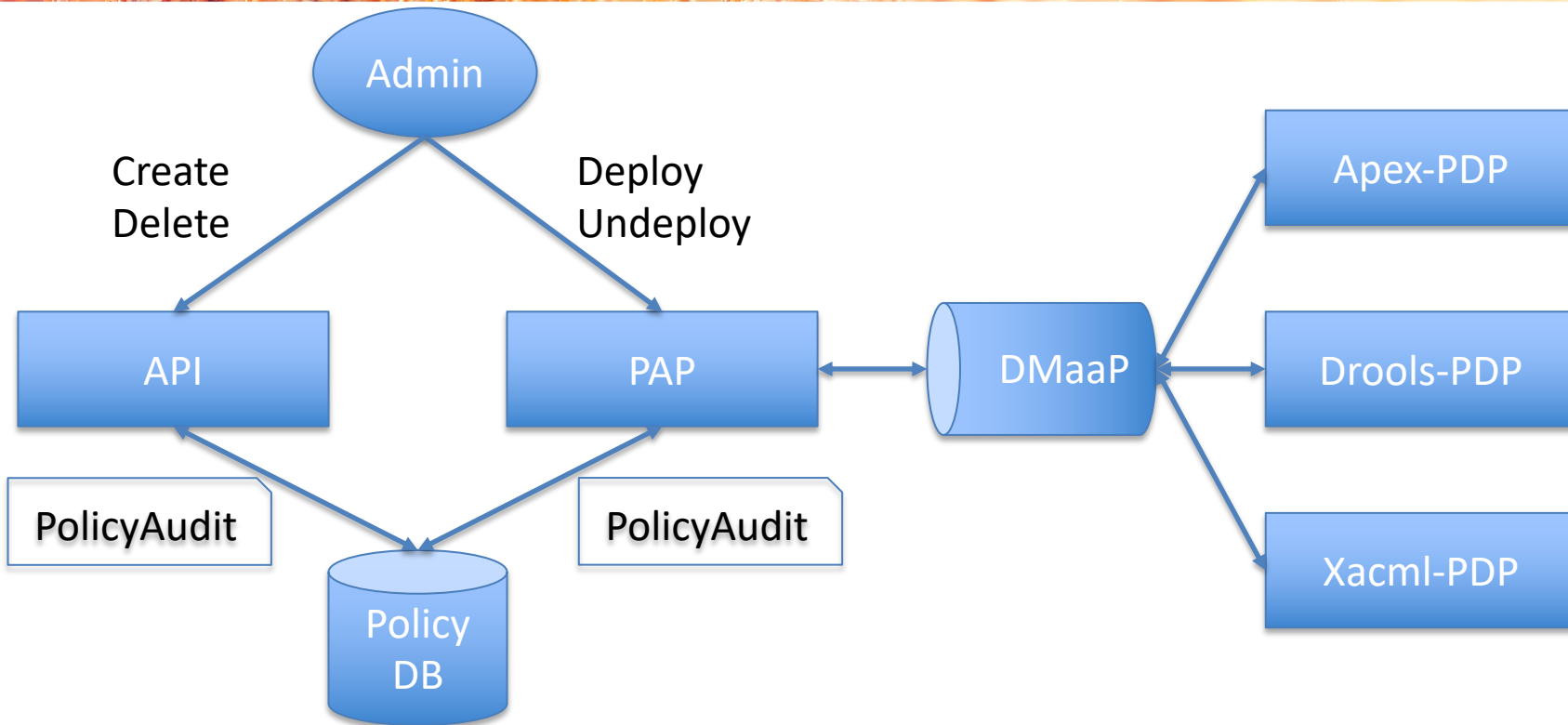
Apex-PDP Enhancements

- Engine instances are now dedicated for each Tosca policy.

Apex-PDP Enhancements

- Ability to send multiple output events, thereby triggering multiple actions in actors/controllers parallelly.
- Adds more flexibility to use case designers.
- Can support complex use cases with parallel & sequential execution requirements.
- Improve stability in production deployments.
- Expose possibilities for monitoring & alerting deployments.

Policy Audit Capabilities



- All Policy components are now exposing system (default jvm) metrics via Prometheus.
- Users can now plugin Prometheus & Grafana tools to visualize & monitor stats exposed by policy components.

A close-up photograph of golden wheat stalks, slightly out of focus, creating a warm, textured background. The lighting is soft and golden, suggesting a sunrise or sunset.

OLF

NETWORKING

LFN Developer & Testing Forum