

A background image featuring a network diagram with blue lines connecting yellow nodes on a dark blue background.

# ONAP CDS – Error Handling in Production Deployments

Aarna Networks - Kavitha P  
Aarna Networks - Vivekanandan M

 THE **LINUX** FOUNDATION

# Agenda

- › Problem statement
- › ONAP CDS Audit logging feature contribution Jira tickets
- › CDS Workflow Audit Logging Design
- › CDS Workflow Audit Logging REST APIs
- › Demo

# Problem Statement

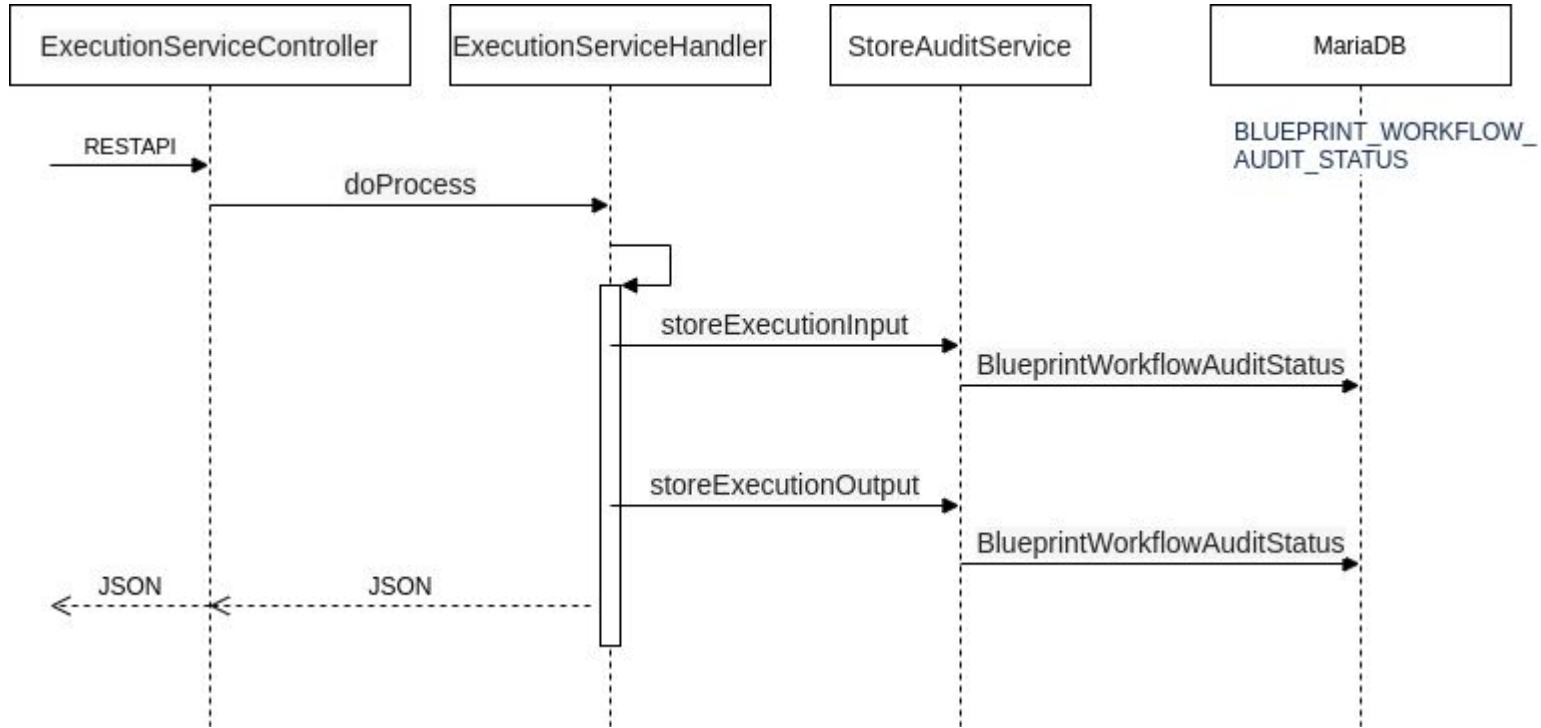
- › CDS does not persist the workflow execution status.
- › Most practical deployments have CDS to execute long running workflows, where workflow status often needs to be accessed in order to trigger workflow resubmit etc.
- › Need to store the complete CDS workflow execution status for audit purpose in production.

# CDS Audit logging and ELK Integration features

- › We contributed the following ONAP Jira tickets
- › CDS Audit Log persistence
  - › [CCSDK-3434](#) (CDS Blueprint Processor Changes)
  - › [CCSDK-3435](#) (CDS py-executor log persistence)
- › CDS Helm chart changes for ELK integration
  - › [OOM-2801](#)
  - › [OOM-2802](#)
  - › [OOM-2803](#)
    - › CDS BP flag to enable/disable audit logging

›

# CDS Workflow Auditing Sequence Diagram



# CDS Workflow Auditing Data Model

- › Introduced a New Database Table

```
desc blueprint_workflow_audit_status;
```

Field	Type	Null	Key	Default	Extra
workflow_audit_id	bigint(20)	NO	PRI	NULL	auto_increment
blueprint_name	varchar(255)	NO		NULL	
blueprint_uuid	varchar(255)	YES		NULL	
blueprint_version	varchar(255)	NO		NULL	
end_time	datetime	YES		NULL	
originator_Id	varchar(255)	NO		NULL	
request_Id	varchar(255)	NO		NULL	
request_mode	varchar(255)	YES		NULL	
start_time	datetime	YES		NULL	
status	varchar(255)	YES		NULL	
subRequest_Id	varchar(255)	NO		NULL	
updated_by	varchar(255)	YES		NULL	
updated_date	datetime	YES		NULL	
workflow_name	varchar(255)	NO		NULL	
workflow_response_content	longtext	YES		NULL	
workflow_task_content	longtext	NO		NULL	

# CDS Workflow Audit Logging REST API

- › New REST API to get the WorkflowController health check

```
curl -v --location \  
--request GET \  
http://{{host}}:{{port}}/api/v1/workflow/health-check \  
--header 'Content-Type: application/json;charset=UTF-8' \  
--header 'Accept: application/json;charset=UTF-8,application/json' \  
--header 'Authorization: Basic Y2NzZGthcHBzOmNjc2RrYXBwcw=='
```

- › New REST API to get the CDS workflow status

```
curl -v --location \  
--request GET \  
http://{{host}}:{{port}}/api/v1/workflow/audit-status/{requestId}/{subRequestId} \  
--header 'Content-Type: application/json;charset=UTF-8' \  
--header 'Accept: application/json;charset=UTF-8,application/json' \  
--header 'Authorization: Basic Y2NzZGthcHBzOmNjc2RrYXBwcw=='
```

# Demo - Recorded Video



Thank You!