



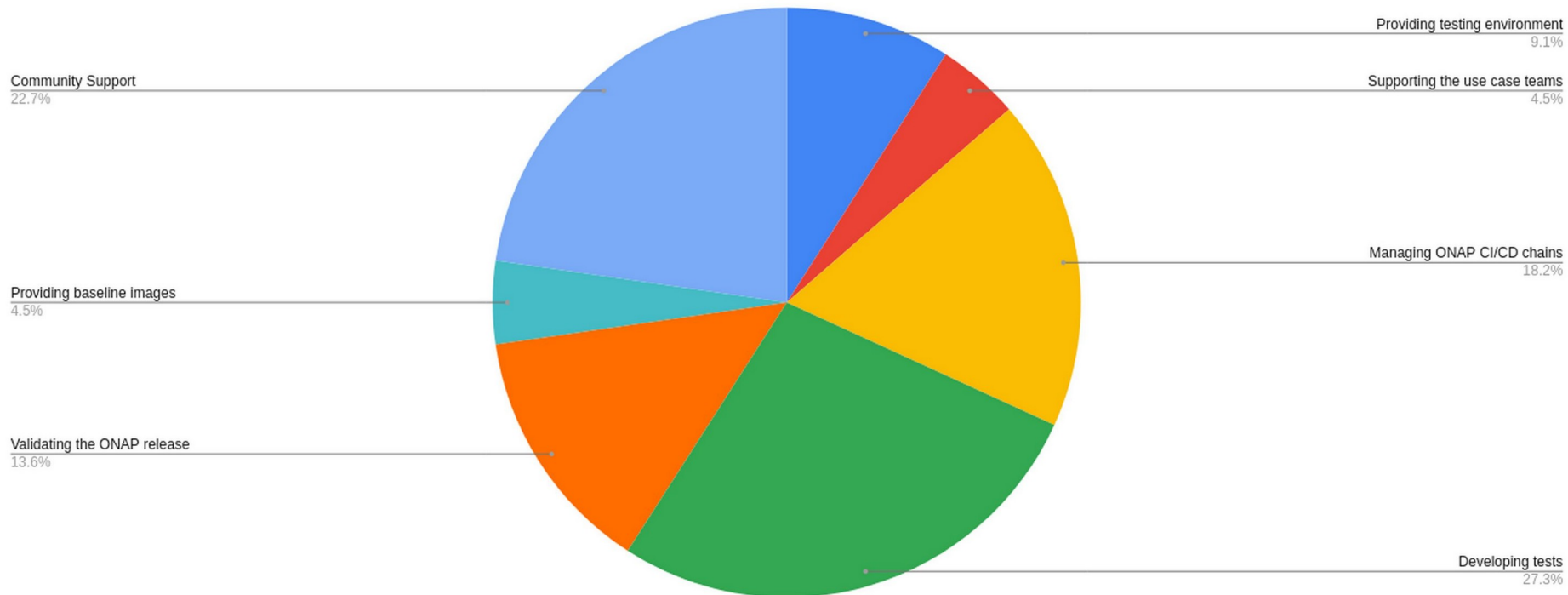
LFN Developer & Testing Forum

# ONAP Integration

Lessons learned from Guilin & priorities for Honolulu

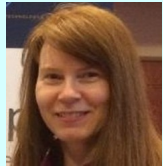
@morganrichomme

# ONAP Integration team missions



<https://docs.onap.org/projects/onap-integration/en/latest/integration-missions.html>

# ONAP Integration committer roadster



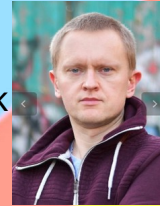
Catherine



Brian



Lukasz



Bartek



**SAMSUNG SAMSUNG**



Lasse



Christophe



Morgan



Andreas



Krzysztof

**NOKIA**



Marcin

**NOKIA**



Michal



Thierry

**SAMSUNG**



Pawel

# ONAP Integration team hall of Fame



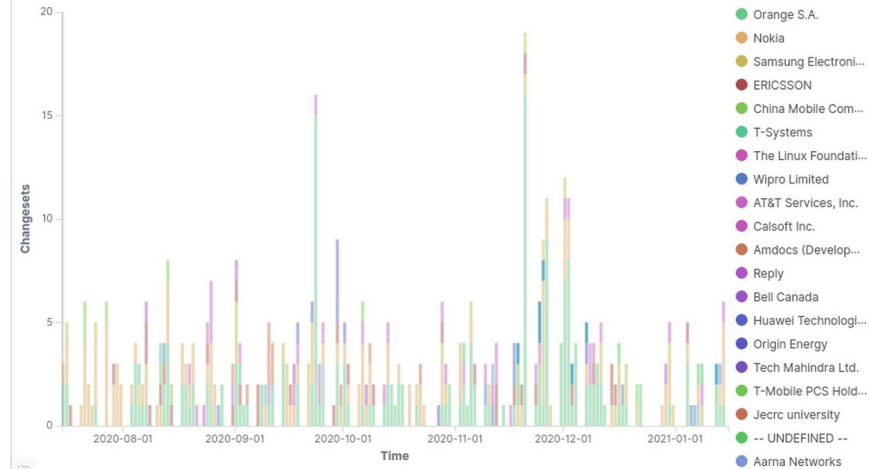
Big Thanks to  
Daniel Rose and  
Marco Platania  
We miss you  
already..

# Last 6 months facts & figures

- 431 changesets
- 82 Changeset submitters
- 16 repositories
- Average Time to First Review : 2,2 days

Repository	Changesets	Submitters
integration/csit	116	39
integration	92	29
testsuite	60	23
testsuite/pythonsdk-tests	59	12
integration/xtesting	47	7
integration/simulators/pnf-simulator	14	7
demo	12	5
integration/docker/onap-java1	8	2
integration/docker/onap-python	8	1
oparent	3	1

Changesets By Organizations



Src <https://insights.lfx.linuxfoundation.org> gerrit changeset filtered on integration ONAP repositories (gitlab.com not considered here)

# Lab support Guilin

Questions ? contact : Morgan, Stephen Gooch

- Windriver lab cleaned
  - Performance audit done => reinstallation needed asap
  - SB-00 reinstalled by Adrzej (Nokia) - SB-00 mandatory for MDONS use case
  - All the other Integration chains deleted
  - Old local jenkins based CI deleted
- Creation of a new Staging lab on Azure + its associated CI chain
  - more than 20 access granted
  - Used for SO troubleshooting



# Lab support Honolulu

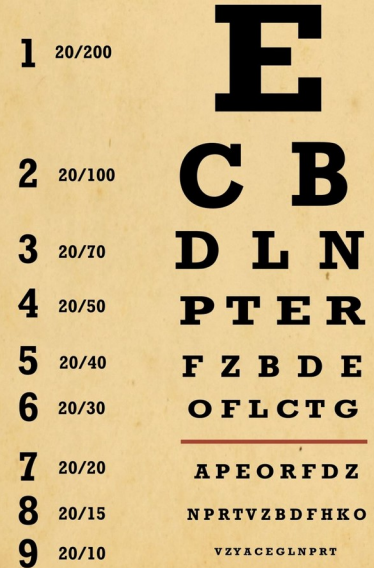
- Full Reinstallation of Windriver lab S1 2021
  - New Titanium version (cloud native)
- Create CI chains on new windriver
  - New integration chains
  - Chains for use cases ?



# Testcases Guilin

Questions ? contact : Pawel, Krzysztof, Marcin,  
Morgan, Christophe, Andreas, Thierry, Bartek, Brian, Michal

- New healthcheck tests included in CI
  - Cmpv2
  - Ves-collector
- New smoke cases included in CI
  - Onap-tests deprecated and replaced by pythonsdk
    - basic\_network
    - basic\_vm
    - basic\_cnf
- New security tests
  - Component versions recommended by SECCOM
- CDS test upstreamed



THIS CHART SHOULD BE VIEWED AT 15 FEET



# Testcases Honolulu

- Start integrating use case suites
  - MDONS
  - 5G use cases
- More pythonsdk tests
- Include CDS tests in CI/CD
- Include stability test in weekly chain
- Refactor of the testsuite (robot) pod
- Enhance version check
  - Add support for new components
  - Improve performance



# Pythonsdk Guilin

## Python SDK:

- introduced in Guilin to replace onaptests
- 18 developers from multiple companies work on development
- Modules covered : A&AI, CDS, Clamp, **Dmaap (New!)**, MSB (with k8s plugin), NBI, SDC, SDNC, SO, **VES (New!)**, VID
- Custom exceptions

## Pythonsdk-tests:

- Creation of associated pythonsdk-test repo in ONAP
- Tests included in CI :
  - basic\_vm
  - basic\_network
  - basic\_cnf
  - basic\_cds
  - clearwater\_ims
  - basic\_onboard
- Automatic reporting



# Pythonsdk Honolulu

## Python SDK:

- More components:
  - OOF
  - Policy
  - ...?

## Pythonsdk-tests

- More tests in CI:
  - basic\_pnf
  - basic\_clamp
  - more tests using macro flow
- Development of a wrapper to consumer docker simulators
- Development of an addon for stability testing



# CI/CD Guilin

Questions ? contact : Morgan

LFN Developer & Testing Forum

- Creation of a staging lab chain for Integration on azure
- Creation of weekly CI/CD chain (master and Guilin) for stability/resiliency/security/long duration tests



# CI/CD Honolulu

- Enhanced Gating/Daily chains
- Consolidation of weekly chains
  - First test automated but some tests still manual (stability)
  - Add tests
- Create Use case chains (1 chain per use case)
- Recreate chains on new Windriver
- Create daily Honolulu
- Nokia is preparing internal daily Xtesting CI builds with IPV6 (dual stack) and plan to share results with community



# CSIT Guilin

Questions ? contact : Lasse

Developer & Testing Forum

- Massive cleanup of the CSIT JJB templates and setups (projects in maintenance mode, obsolete image versions being tested, etc.)
- Improved active CSITs (fix broken setup checks, reduce or remove excessive wait times)
- CSIT redesign (with Music project as PoC)
  - bring CSITs to their respective project repositories
  - new JJB templates to include CSIT in review verification and give feedback to the developers before merge



# CSIT Honolulu

- Partial redesign of artifact and docker image versioning strategy to support CSIT redesign
- Finalize CSIT redesign
- Take CSIT redesign in use in active projects
  - CCSDK distribution project is the first showcase example
  - SDC and Policy projects are partially applying some of the redesign principles

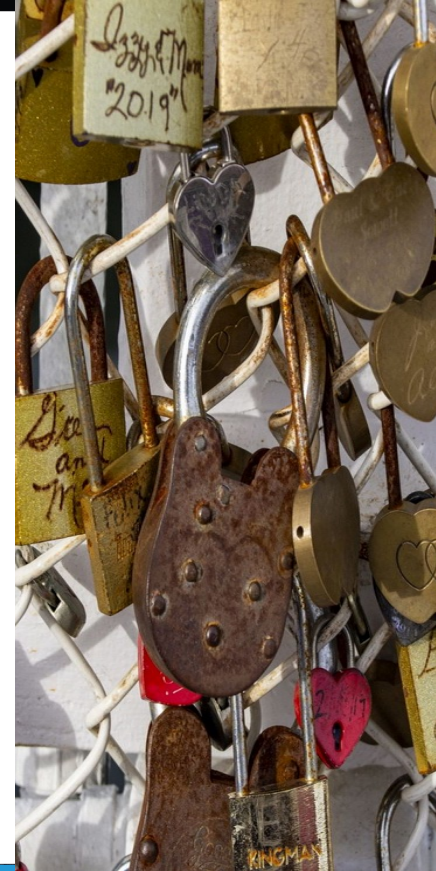


# Community & use case support Guilin

Questions ? contact : Morgan, Bartek

LFN Developer & Testing Forum

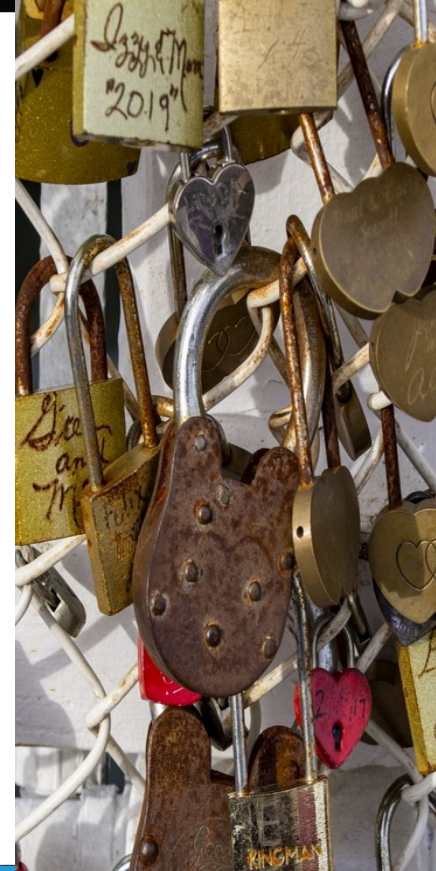
- Rocket chat very active
- Integration Wiki page refactored
- Integration official doc fully refactored in Guilin
- New repos / more small repos
  - Usecases
  - Simulators
- Verification job systematically added





# Community & use case support Honolulu

- From Rocket chat to slack on the 1st of February
- Onboard Use case tests in CI/CD (5G CCVPn, MDONS, SON,..)
- New small repos
- Refactoring of Simulators (improve quality & visibility of mature simulators)
- Improve verification jobs



# Stability and Resiliency tests Guilin

Questions ? contact : Morgan

LFN Developer & Testing Forum

- Long duration (1 week)
- No resiliency



# Stability and Resiliency tests Guilin

Dedicated session today 5PM UTC

- Long duration tests in weekly chain
  - // onboarding
  - // instantiation
- Start studying resiliency test
  - K8s node Reboot survival test
  - K8s chaos framework
  - B&R





- Thats all folks.svg - wikipedia - public domain
- Server Network Cables :  
<https://www.publicdomainpictures.net/en/view-image.php?image=102081&picture=server-network-cables> - public domain
- Eye Chart Test Vintage :  
<https://www.publicdomainpictures.net/en/view-image.php?image=244244&picture=eye-chart-test-vintage> - public domain
- Mixed gears : <https://www.publicdomainpictures.net/en/view-image.php?image=260628&picture=mixed-gears> - public domain
- Rope Connection Loop :  
<https://www.publicdomainpictures.net/en/view-image.php?image=297951&picture=rope-connection-loop> - public domain
- Love padlocks : <https://www.publicdomainpictures.net/en/view-image.php?image=316136&picture=love-padlocks> - Public Domain
- I Like it : <https://www.publicdomainpictures.net/en/view-image.php?image=371988&picture=i-like-it> - Public Domain
- Stones Zen : <https://www.publicdomainpictures.net/en/view-image.php?image=190527&picture=stones-zen> - Public Domain
- Snake : <https://www.publicdomainpictures.net/en/view-image.php?image=212014&picture=snake> - Public Domain



# OLF NETWORKING

---

LFN Developer & Testing Forum