

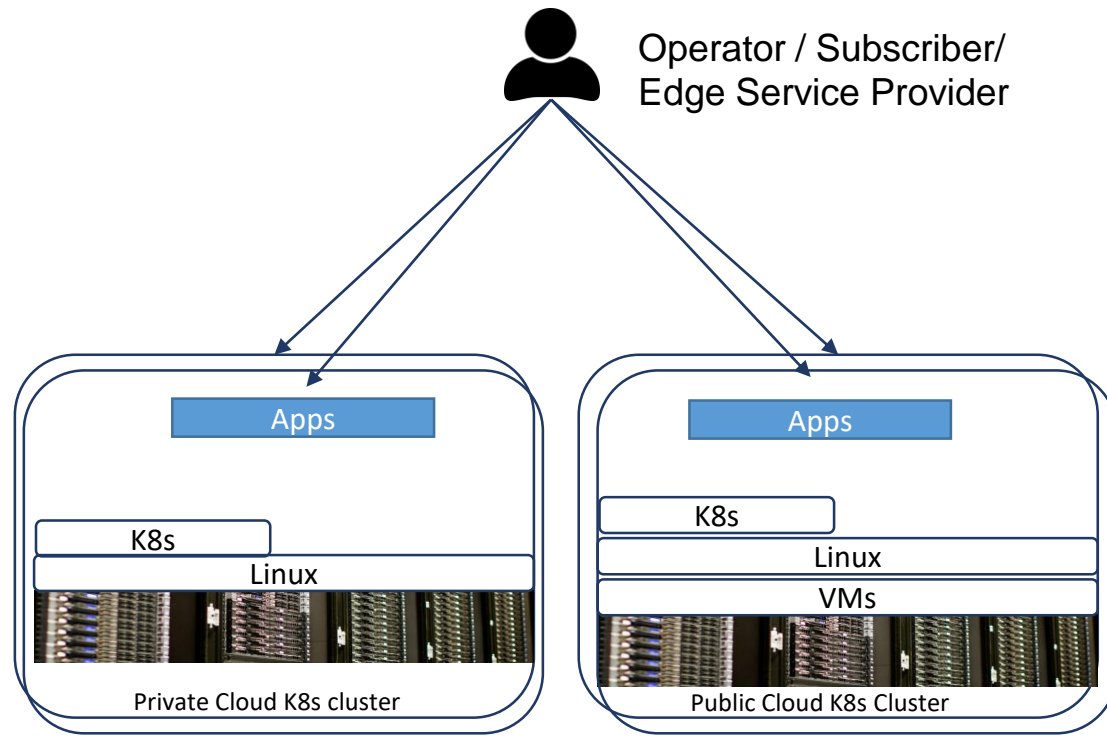
ONAP4K8s (EMCO), OVN4NFV-K8s and SD-EWAN
Open Source Projects that Akraino/ICN
family integrate and some cases developing
as feature projects

Contacts: Srinivasa.r.addepalli@intel.com; kuralamudhan.ramakrishnan@intel.com

What is ICN ?

- A reference architecture/integration initiative targeting Telco edge, On-Prem Edge computing use cases
- Approved (incubation phase) as a 'blueprint' family within the Akraino project (LF)
- ICN Family has two blue prints
 - Multi-server Integrated Cloud Native NFV/App stack
 - Private LTE/5G
 - (Proposal) Multi tenancy security cloud native stack
- ICN Family has 16 Partners – Ranging from Telco, Enterprises and SIs
- Intel-optimized ingredients include: OpenNESS, EdgeX, SRIOV, QAT, CSI/Optane, K8s HPA, etc.

Traditional Cloud Native frameworks For Enterprise applications



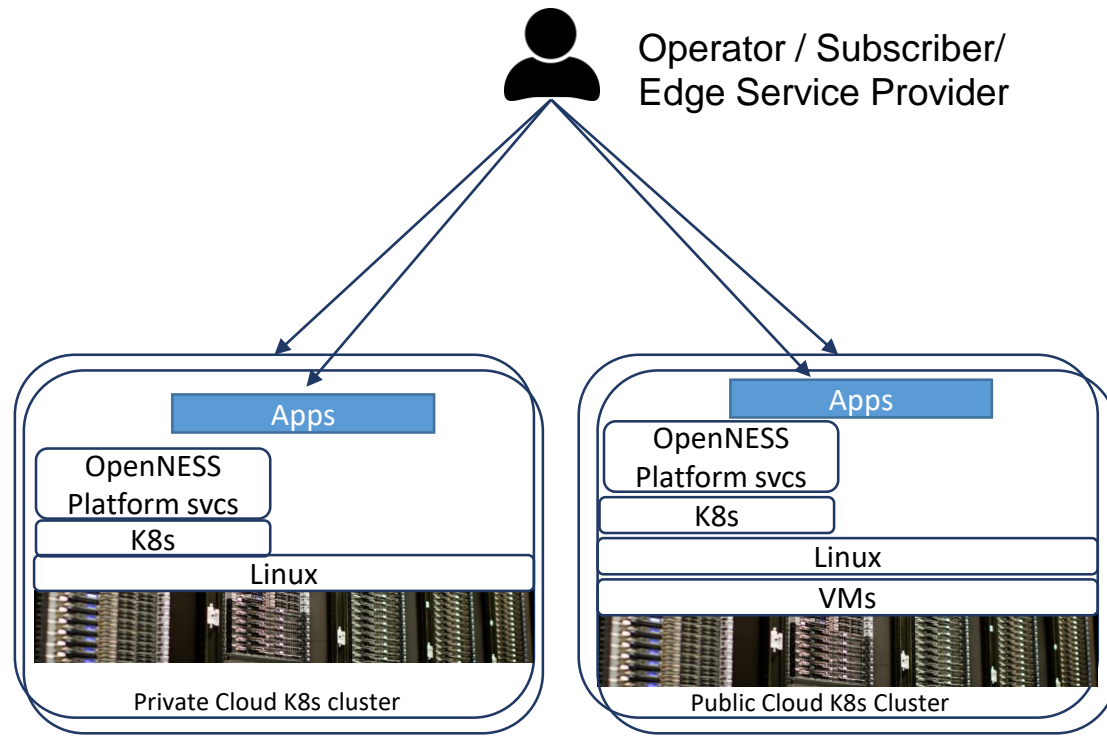
Traditionally

- Number of K8s clusters are small
- K8s Cluster installation/upgrades are mostly done independently in each location.
- Deployment of applications on K8s clusters is also done independently.
- K8s clusters are used for normal applications
- Network and security functions are deployed outside of K8s clusters as physical appliances or virtual appliances

Today K8s Clusters are not meant for Network functions and Telcos. Need for Telco grade platform.
Let us see the needs

Need: High performance applications

Low latency, Deterministic performance & high throughput



High performance applications requirement

- *Dedicate cores*
- *Core affinity*
- *L3 Cache allocation*
- *NUMA aware placement*
- *Dedicating Memory bandwidth*

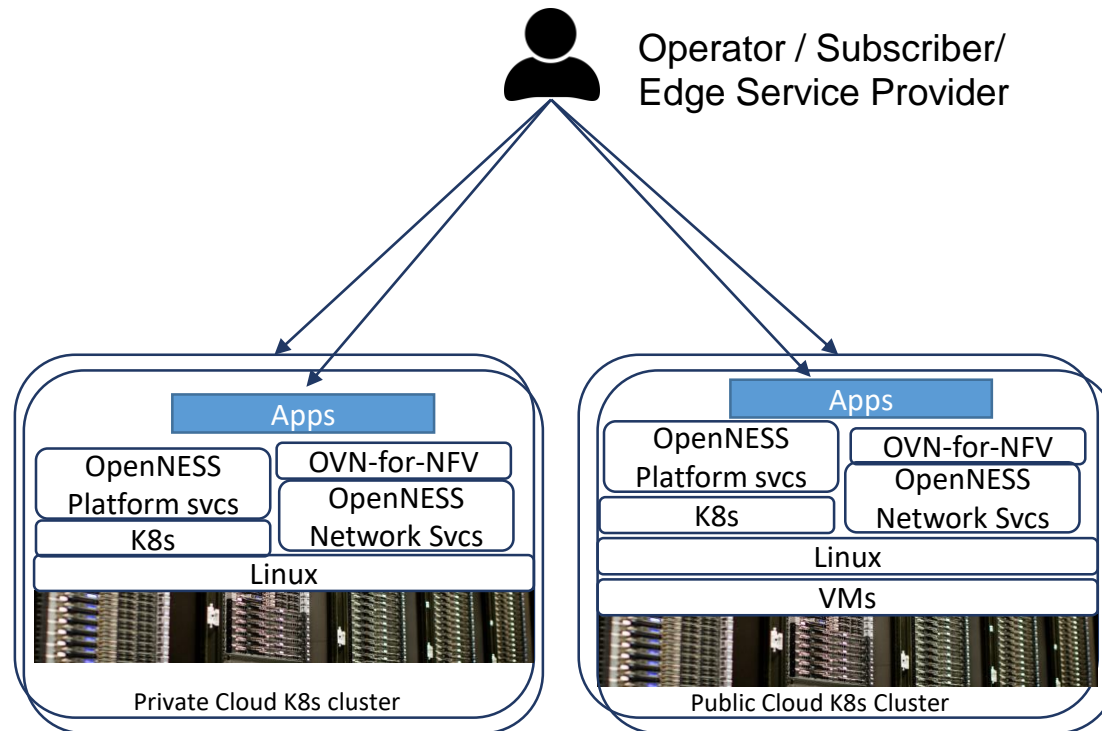
Intel ICN solution

- OpenNESS platform micro-services
 - CMK for core affinity/dedication.
 - Topology manager for NUMA aware placement
 - KPI aware scheduling
 - RDT configuration

Need: Cloud Native network functions

Resource constrained Edges, Data plane NF (such as UPF, firewall, RAN) support

Separate Management Interface



Network function requirements

- *SRIOV-NIC support*
- *Multiple CNIs*
- *Multiple virtual networks*
- *Provider network support*
- *Service function chaining*
- *Some cases, attaching GPU and FPGA based accelerators.*
- *Platform feature exposure*

Akraino ICN solution:

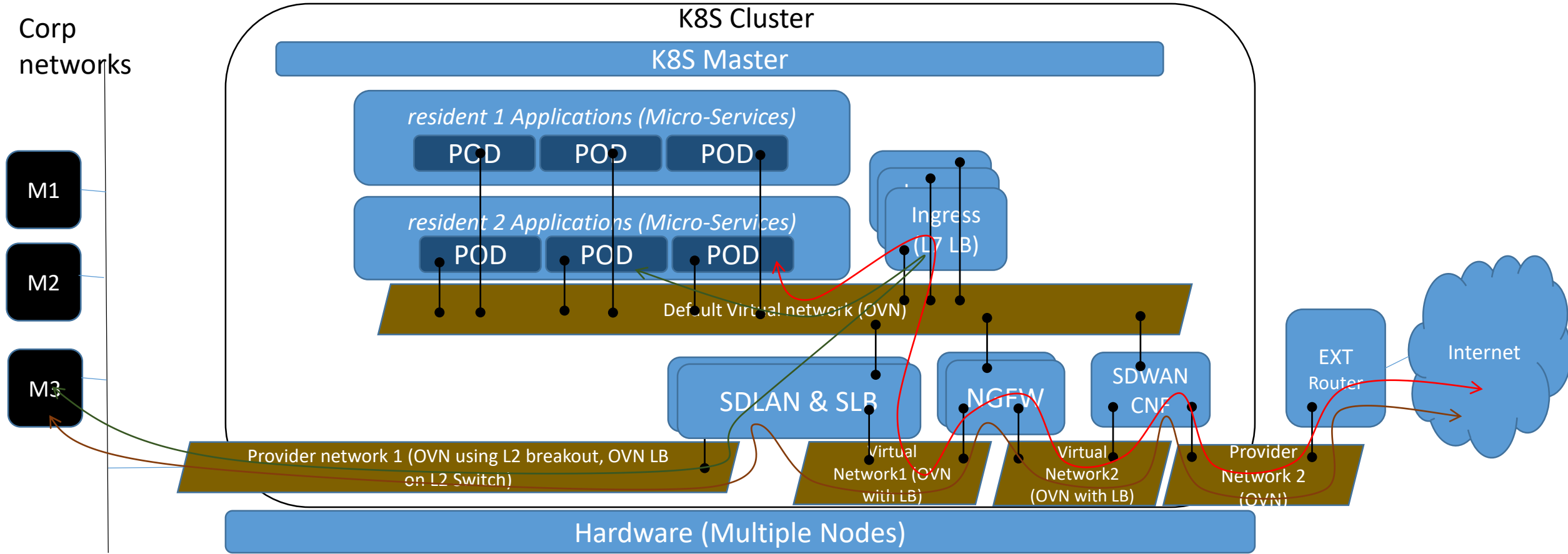
- OpenNESS Network Services
 - SRIOV-NIC device plugin/CNI
 - FPGA Device service.
 - Multus for Multiple CNI support
 - NFD
- OVN4NFV-K8s Network Controller:
 - For Multiple virtual networks, Provider networks & Service function chaining

OVN4NFV-K8s

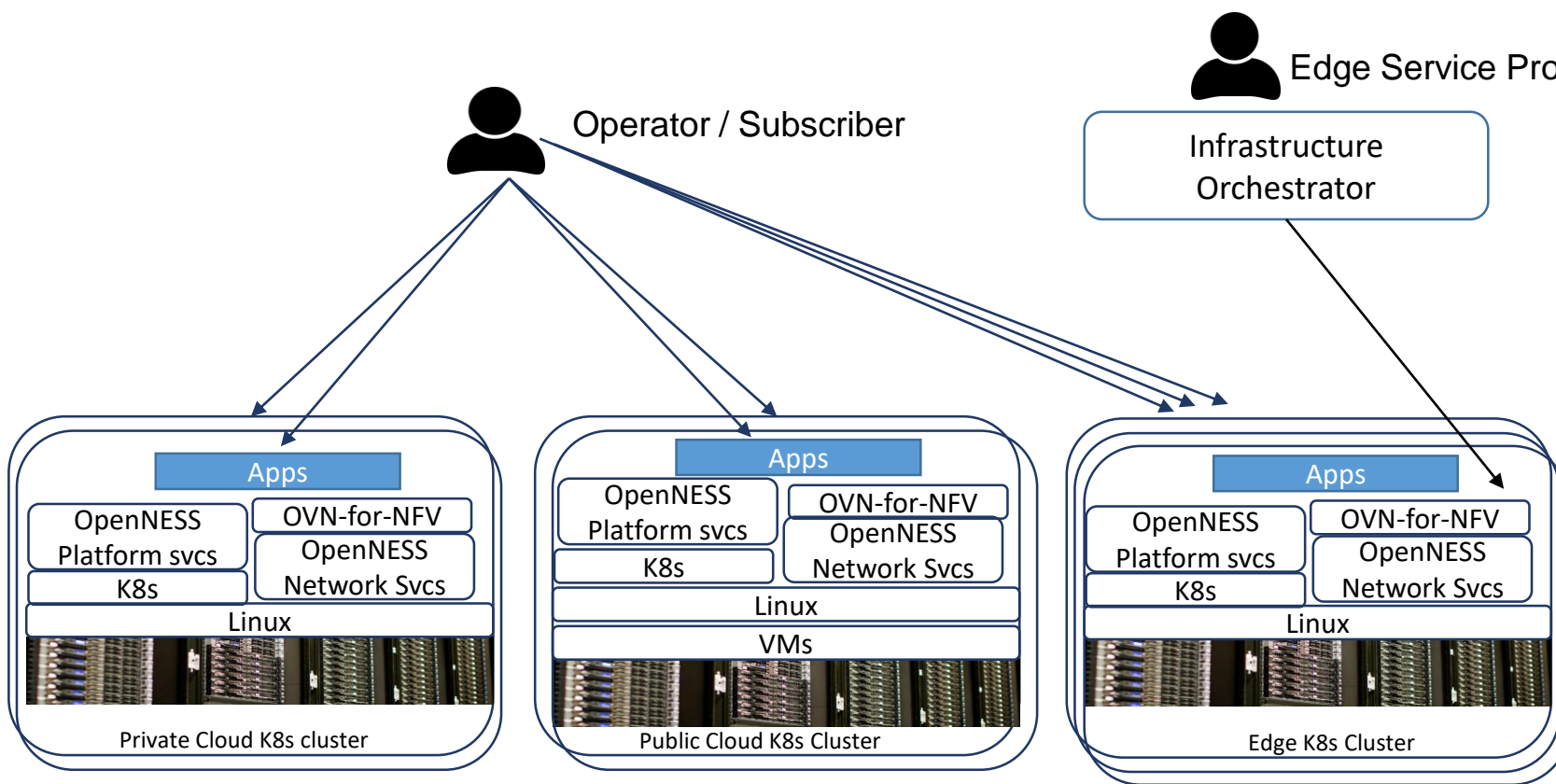
<https://github.com/opnfv/ovn4nfv-k8s-plugin>

How does NFV based deployment with Cloud Native network functions look like ? (Taking SDWAN with security NFs as an example)

[View in Slide show](#)



Need: Support for Large number of Edges Simplify cluster life cycle management



Possibly in hundreds

Large number of Edge Cluster

- Install, upgrade/patch and terminate are complex operations

Intel ICN solution

- Infrastructure orchestration (**infra-local-controller**) based on ClusterAPI, Metal3 and Ironic.

ICN Infra local controllers:
<https://gerrit.akraino.org/r/admin/repos/icn>

Need: Geo-Distributed Application (Such as 5GRAN, 5GC) Life Cycle management For geo-distributed applications across multiple K8s clusters



Operator / Subscriber

Deploy & Manage Apps - EMCO

Onboard

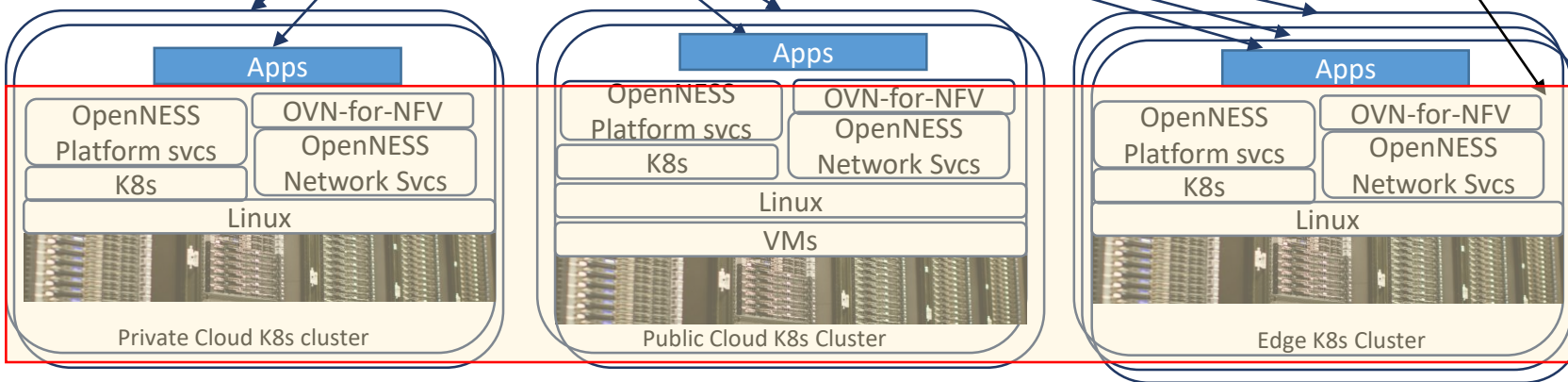
Deploy

Visibility



Edge Service Provider

Infrastructure
Orchestrator



Possibly in hundreds

Distributed Application
deployment and visibility

- Simplify
- Geo distribution

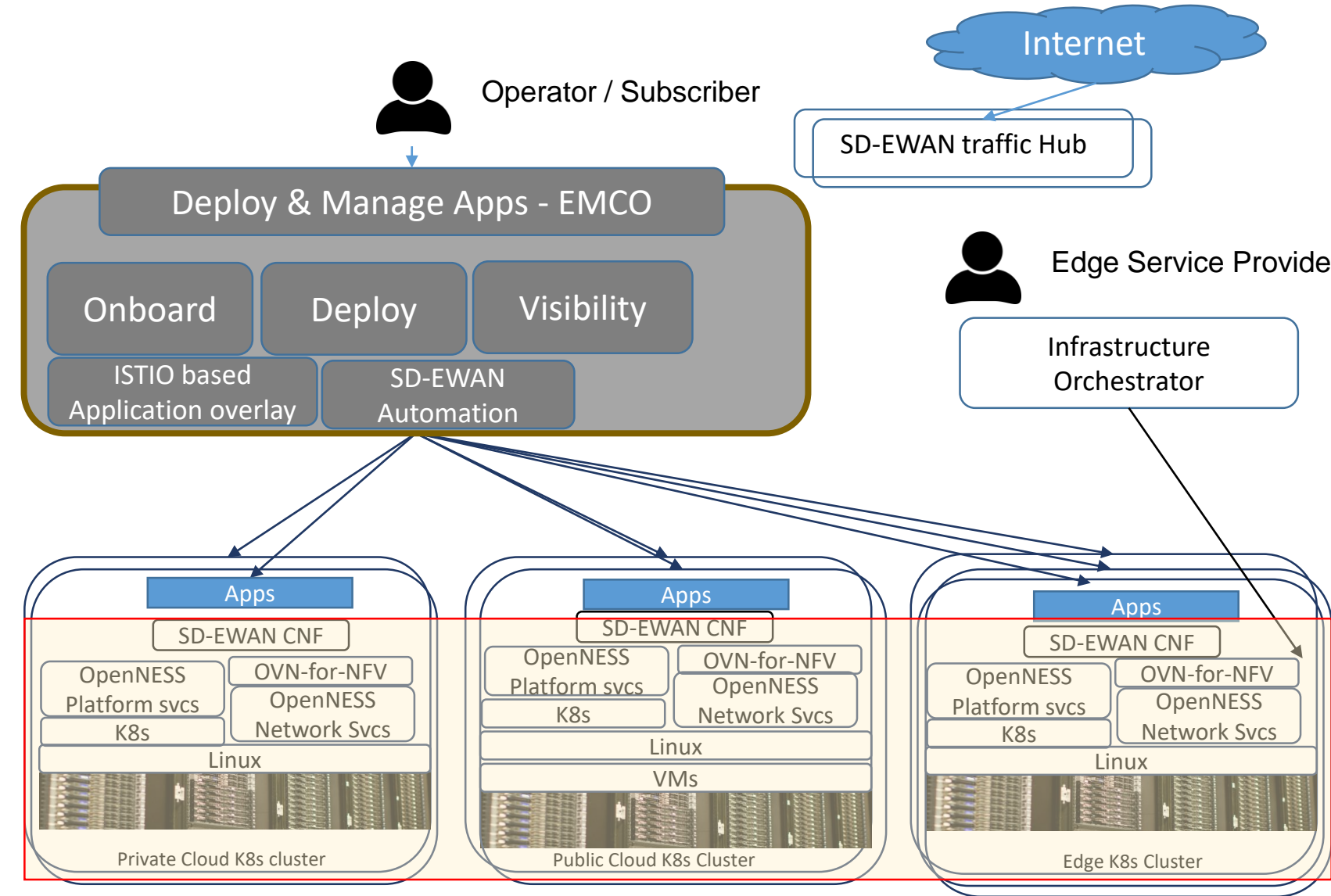
Intel ICN solution:

- EMCO
 - Onboarding of composite applications
 - Deployment intent
 - Configure ISTIO and security of edges automatically
 - Comprehensive visibility across clusters

<https://github.com/onap/multicloud-k8s>

Need: Secure Overlay

For connecting edge locations security for inter application traffic



Unique Edge challenges (No public IP, Less bandwidth links, Prone to DDOS attacks) and the need for overlay

Intel ICN solution:

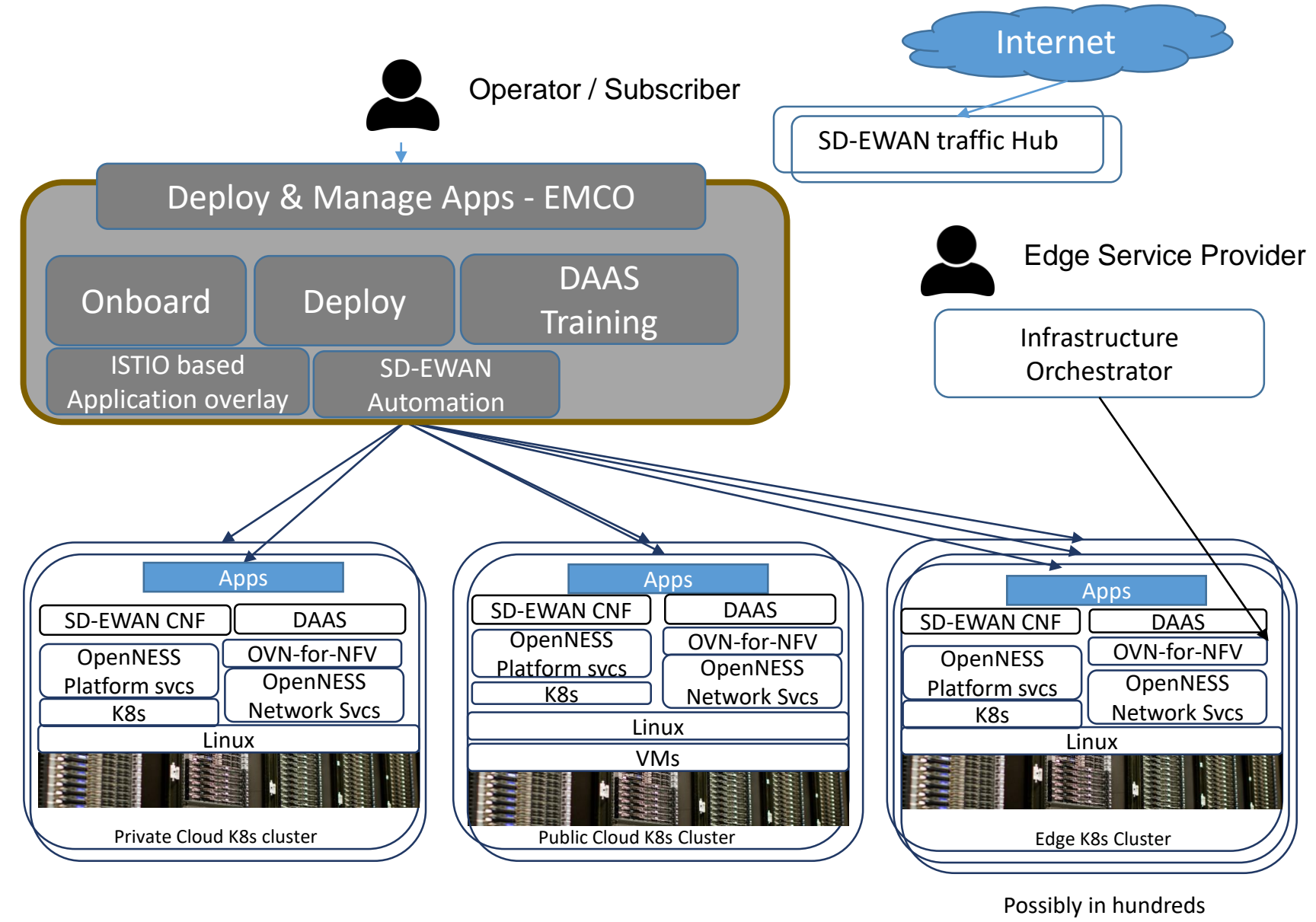
- SD-EWAN
 - OpenWrt based
 - CNF
 - Cloud native configuration
 - Traffic Hub for traffic sanitization
 - Controller Hub to create security and WAN policies dynamically
 - FW+NAT+DPI+IPSEC+SLB
- ISTIO/Envoy based Application overlay
 - Automation of ISTIO (Ingress, egress & SC) across edges for microservice connectivity

Possibly in hundreds

<https://gerrit.akraino.org/r/gitweb?p=icn/sdwan.git>

Need: Analytics

For collecting statistics and making them available for analysis & closed loops

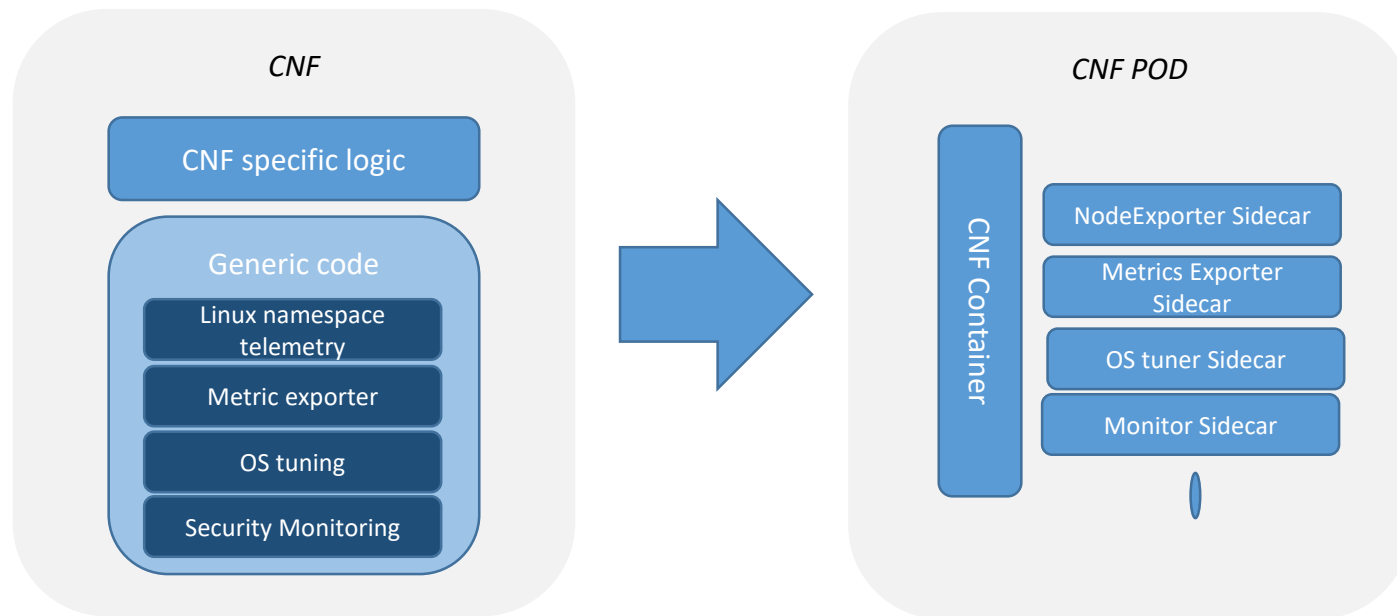


- Local collection agents
- Local inferencing and closed loop
- Centralized metrics collection
- Training
- Model Reps
- Policy based Analytics
- Rule Synchronizer

Akraino ICN solution:

- Distributed AI Analytics
 - CollectD, Prometheus
 - Grafana
 - M3DB for central collection
 - Spark & TF for training
 - Kafka for distribution
 - Minio for storage
- Flexibility to deploy various pieces at various locations.

Need: Common CNF middleware as Sidecars (Yet to be done)



Need:

Make Telco specific logic as common infrastructure logic

- Control to DevOps/DevSecOps
- Increase productivity of CNF developers
- Automate the addition of sidecars (Example: Via EMCO) at the time of deployment

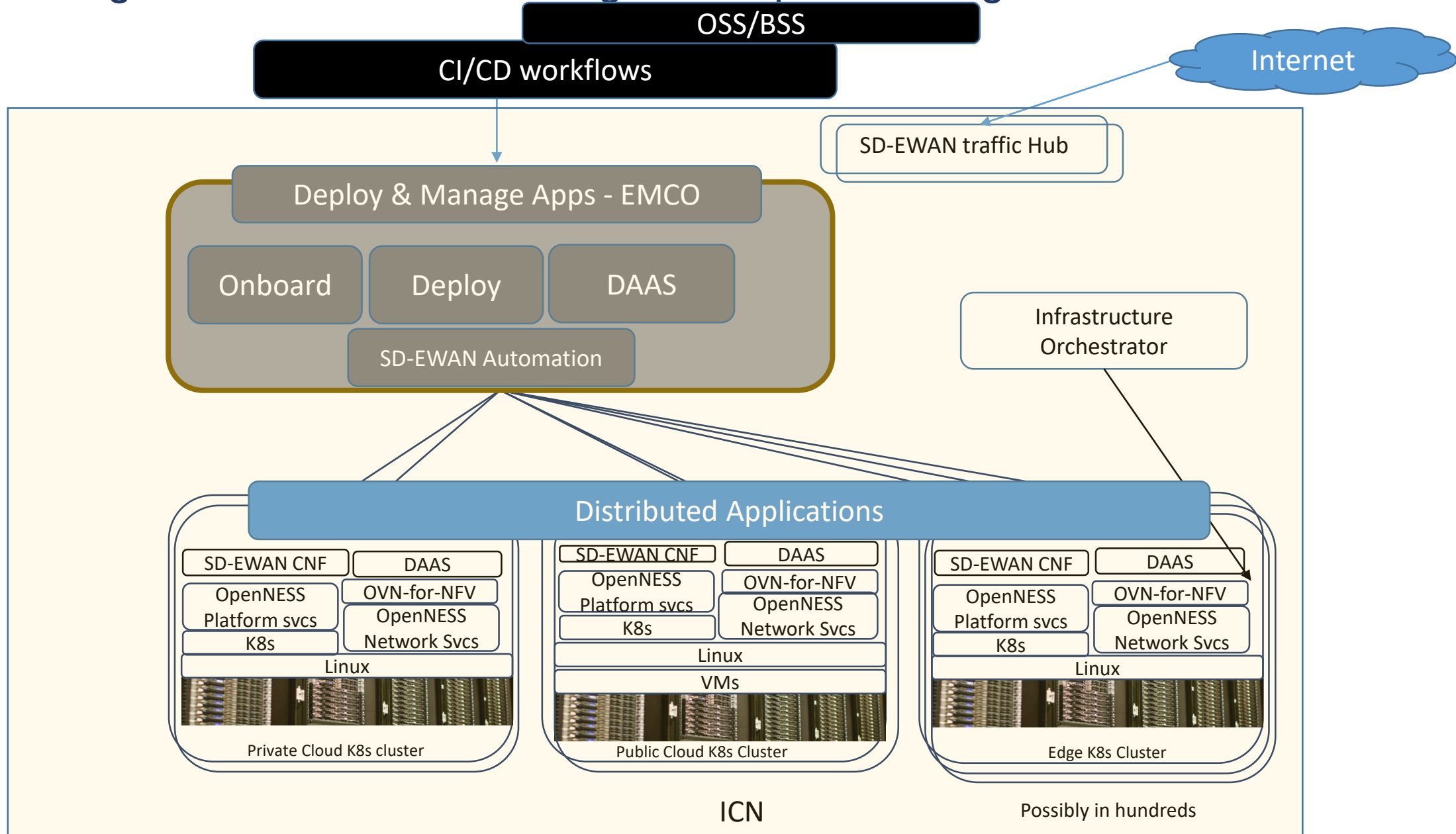
Note: Some operations can only be done as POD

ICN goals:

- Identify common blocks across CNFs for various market segments.
- Make them as sidecars
- Few that can be started with are:
 - Linux namespace specific metrics exporter (NodeExporter) as side car
 - Tuning
 - Monitoring (Tamper detection, scanning)

MICN

Integrated Platform combining all components together



ICN Recipe

LFN / LFE Efforts

Multi Edge/Cloud Orchestrator –
EMCO

Cloud Native Edge WAN function
SD-EWAN

OVN based CNI : **OVN-for-K8s-
NFV**

Infrastructure Orchestration : **BPA**

Distributed AI Analytics Stack : **DAAS**

OpenNESS toolkit

MEC type service discovery

Topology, CPU Manager, NFD

OpenVINO

platform device plugins

CNIs (Multus, SRIOV-NIC,
OVS-DPDK)

Cloud Native industry Open Source projects

K8s

ISTIO

Prometheus

Virtlet/
Kubevirt

CollectD

Envoy

Ceph/
Rook

FluentD

- **ICN is an excellent starting point for Cloud native Telco grade PaaS**
- **But with modular extensions and services that can be built upon in Telco , Enterprise and IOT uses cases**
- **ICN is complete End2End platform – All SW and HW necessary for Edge Service Providers and Telcos that require deployment of CNFs, VNFs, CNAs and all working together.**

Integration
Validation
Platforms
with XEON-SP, OS
Use cases (uCPE, 5G
RAN, 5GC, AI Vision)

ICN BPs

Integrated Cloud Native Edge
SW platforms for Enterprises,
IoT and Telco markets

ICN is complete End2End platform – All SW and HW necessary for Edge Service Providers and Telcos that require deployment of CNFs, VNFs, CNAs and all working together.

ICN Current Status and Roadmap

(Subject to resources availability – Get Involved 😊)

Q4, 2019

- 1st release
- Local infrastructure controller
- Integration of OVN-for-K8s-NFV, OpenNESS platform and network services.
- VNF, CNF support
- Integration with EMCO
- Ubuntu OS

Q2, 2020

- SD-EWAN CNF support
- SD-EWAN to replace external load balancer
- SD-EWAN K8s based configuration
- More test cases
- VM based K8s support
- Higher integration with EMCO

Q4, 2020

- Traffic Hub integration
- EMCO v2 API integration with SD-EWAN
- SFC chaining
- DCM support in EMCO in ICN
- SDEWAN and IPsec Controller, SDEWAN HUB
- CentOS support
- OVN based Network Policy in OVN4NFV-k8s
- OVN based Cluster IP LB (Instead of IPVS)

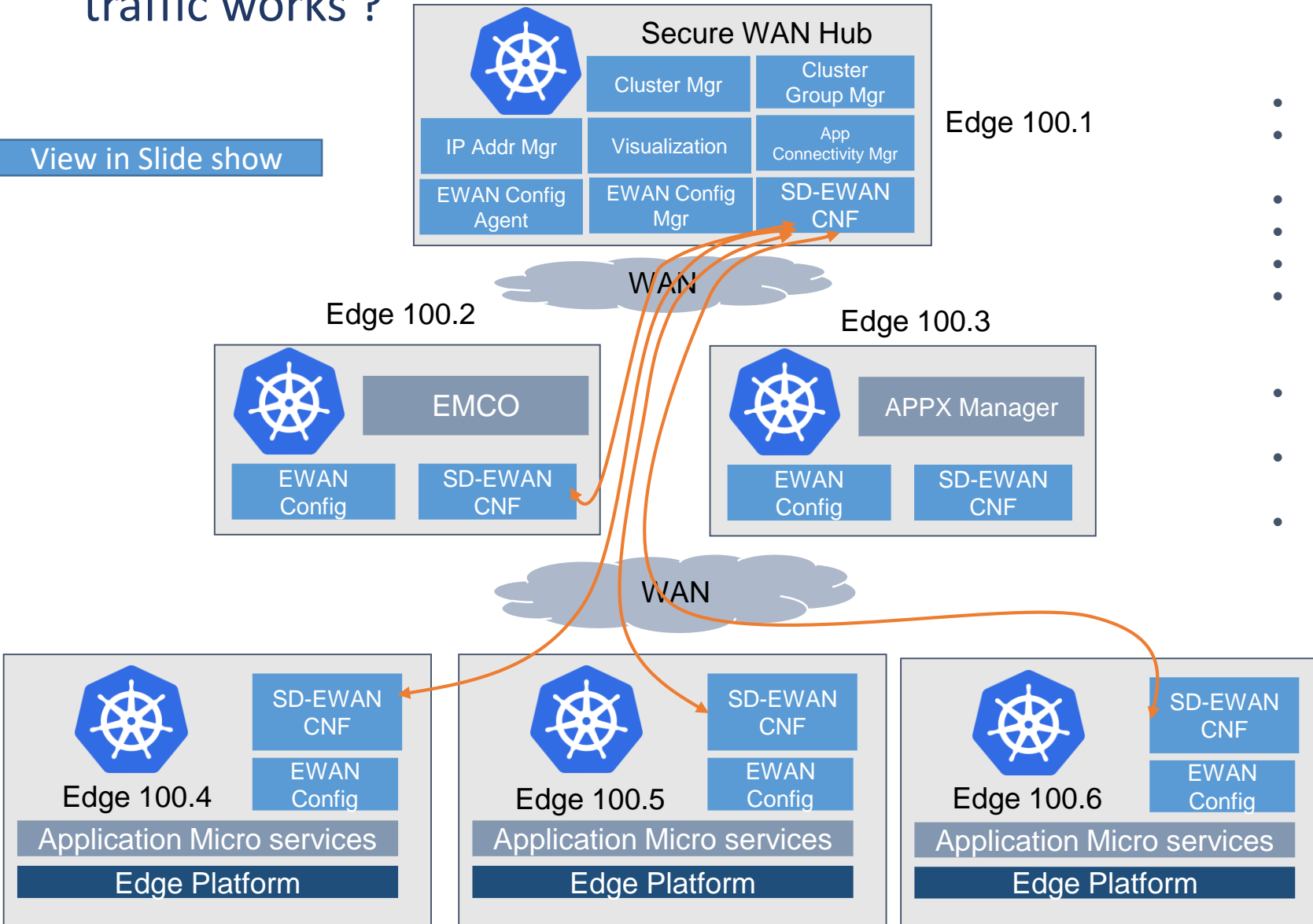
Yet to be planned

- Optimization with Intel IA Accelerators (QAT, AES-NI) in SDEWAN
- Cluster API
- Global Infrastructure Orchestration support
- Common CNF Middleware as sidecars
- technical debt
- Others...

Q&A

How the Secure Overlay For connecting edge locations security for inter application traffic works ?

View in Slide show



SD-EWAN

- Open WRT based SE-DWAN CNFS
- Cloud Native based SD-EWAN controller and IPsec controller
- Zero touch automation
- Solution to all Edge Challenges identified
- Centralization controller for configuration
- Traffic Hub for sanitization

Advantages

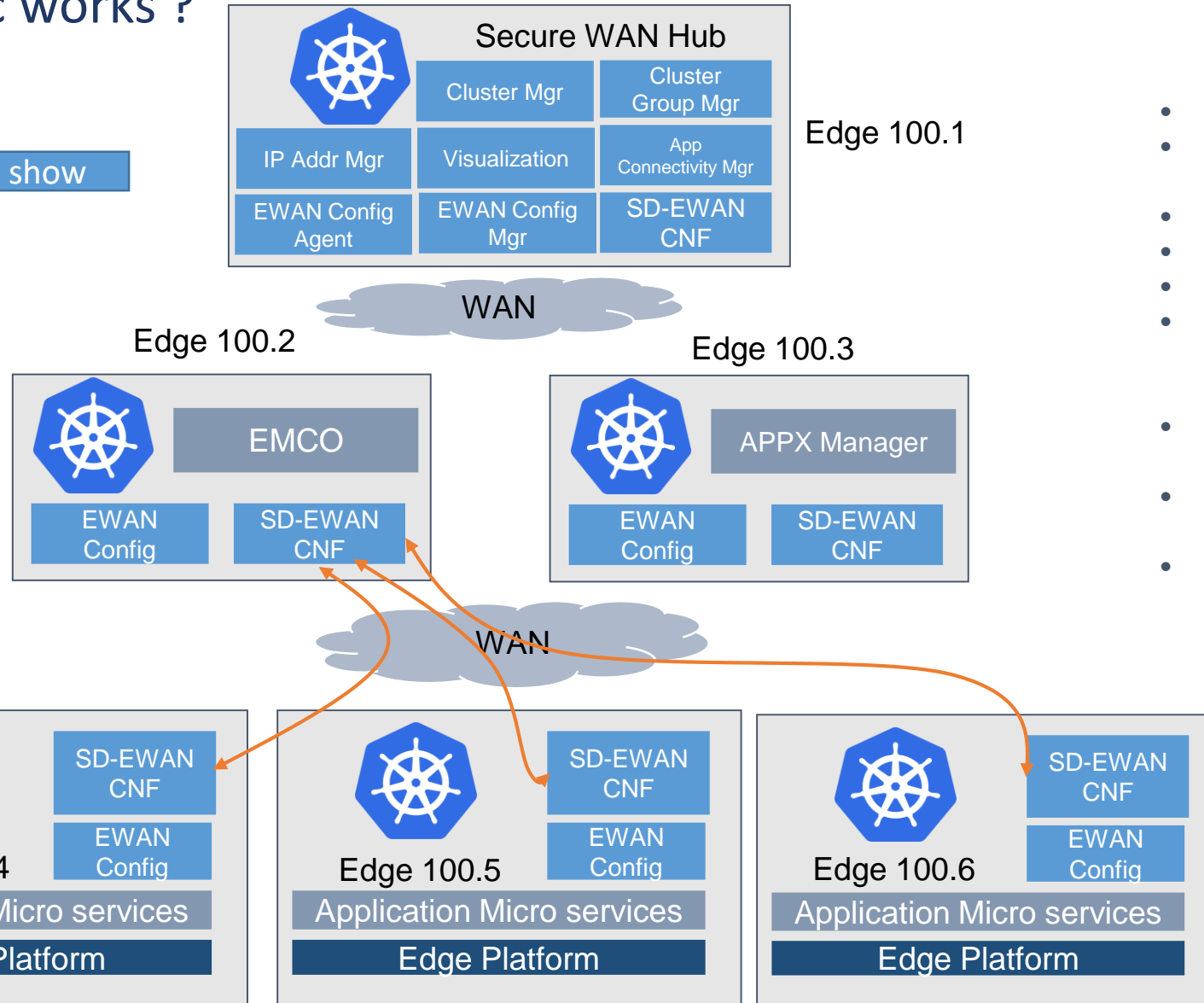
- No changes to application Micro services and configuring Edges
- Supporting both green field and brownfield requirements
- Work with third party SD-WAN VNFs (future roadmap)

Refer

Repo: <https://gerrit.akraino.org/r/admin/repos/icn/sdwan>

How the Secure Overlay For connecting edge locations security for inter application traffic works ?

View in Slide show



SD-EWAN

- Open WRT based SE-DWAN CNFS
- Cloud Native based SD-EWAN controller and IPSec controller
- Zero touch automation
- Solution to all Edge Challenges identified
- Centralization controller for configuration
- Traffic Hub for sanitization

Advantages

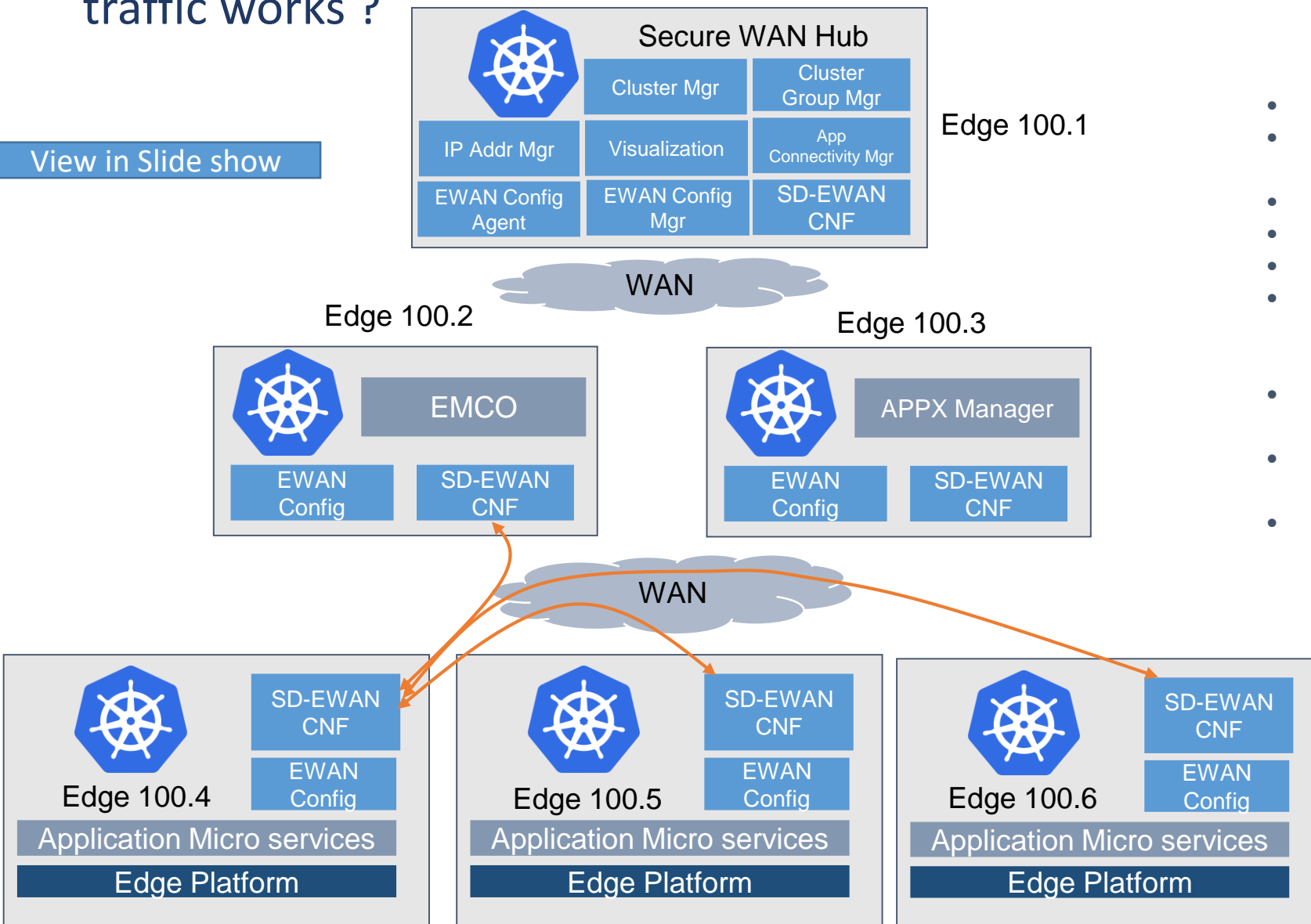
- No changes to application Micro services and configuring Edges
- Supporting both green field and brownfield requirements
- Work with third party SD-WAN VNFs (future roadmap)

Refer

Repo: <https://gerrit.akraino.org/r/admin/repos/icn/sdwan>

How the Secure Overlay For connecting edge locations security for inter application traffic works ?

View in Slide show



SD-EWAN

- Open WRT based SE-DWAN CNFS
- Cloud Native based SD-EWAN controller and IPsec controller
- Zero touch automation
- Solution to all Edge Challenges identified
- Centralization controller for configuration
- Traffic Hub for sanitization

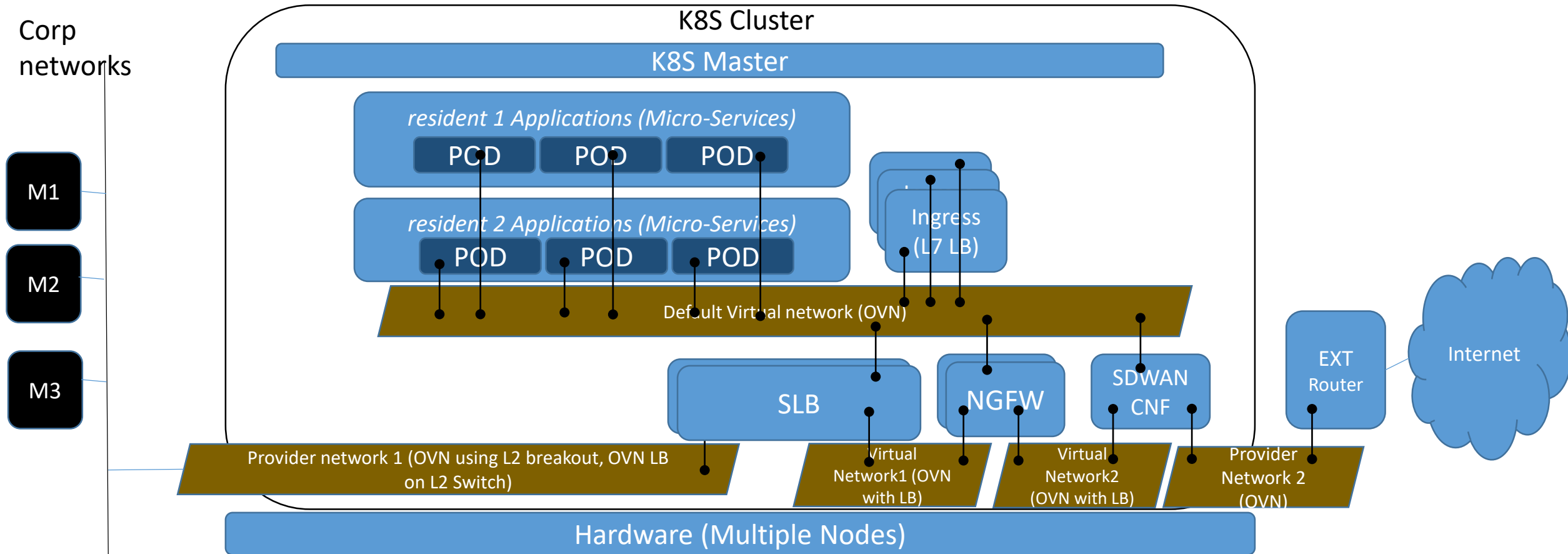
Advantages

- No changes to application Micro services and configuring Edges
- Supporting both green field and brownfield requirements
- Work with third party SD-WAN VNFs (future roadmap)

Refer

Repo: <https://gerrit.akraino.org/r/admin/repos/icon/sdwan>

NFV based deployment with Cloud Native network functions requirements



Feature Reqmts	Dynamic virtual Networks	Provider networks	Multiple interfaces	Network function chaining	Network function load balancing
Implementation Consideration	No changes to NFs	No changes to Apps	Configuration via operators	OVN based SRIOV Overlays	Smart NIC friendly & AF_XDP for packet processing NFs

OVN4NFV: <https://gerrit.opnfv.org/gerrit/admin/repos/ovn4nfv-k8s-plugin>